

WAAS CH 93612 W24A	APP CRS 241°	Rwy Idg 6303 TDZE 47 Apt Elev 47
--	------------------------	---

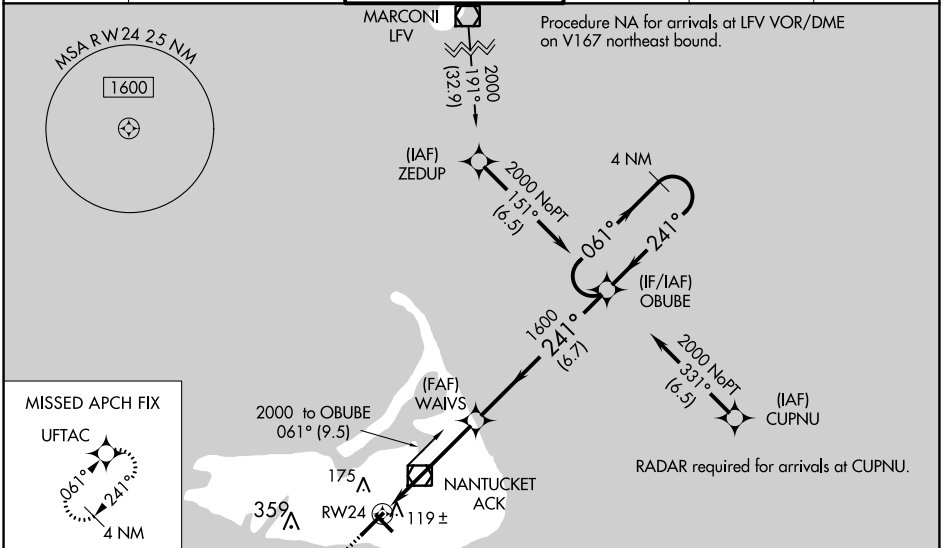
RNAV (GPS) RWY 24

NANTUCKET MEML (ACK)

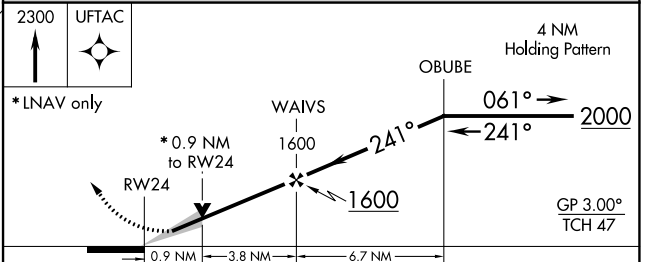
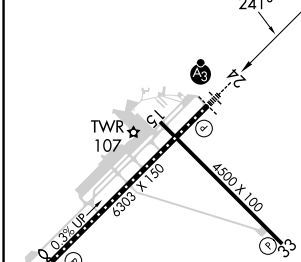
▼ For uncompensated Baro-VNAV systems, LNAV/VNAV NA below -12°C (11°F) or above 54°C (130°F). DME/DME RNP-0.3 NA. Baro-VNAV and VDP NA when using Hyannis altimeter setting. When local altimeter setting not received, use Hyannis altimeter setting and increase LPV DA to 310 feet and LNAV/VNAV DA to 363 feet and all MDA 80 feet, increase LNAV/VNAV all Cats visibility to RVR 3000 and LNAV Cats C/D visibility to RVR 4000 and Circling Cats C/D visibility ¼ SM. For inop SSALR increase LNAV/VNAV all Cats visibility to RVR 4000. For inop SSALR when using Hyannis altimeter setting, increase LPV all Cats visibility to RVR 4500, LNAV/VNAV all Cats to RVR 5000, and LNAV Cats C/D to RVR 6000. ** 2400 RVR when using Hyannis altimeter setting.

SSALR
MISSED APPROACH:
Climb to 2300 direct UFTAC and hold.

ATIS 127.5	BOSTON APP CON 126.1 318.1	NANTUCKET TOWER * 118.3 (CTAF) 0	GND CON 132.5	CLNC DEL 119.375	UNICOM 122.95
----------------------	--------------------------------------	--	-------------------------	----------------------------	-------------------------



ELEV 47	D	TDZE 47
---------	----------	---------



TDZ/CL Rwy 24 REIL Rwys 15 and 33 MIRL Rwy 15-33 HIRL Rwy 6-24	<table border="1"> <tr> <td>CATEGORY</td> <td>A</td> <td>B</td> <td>C</td> <td>D</td> </tr> <tr> <td>LPV DA**</td> <td colspan="4">247/18 200 (200-½)</td> </tr> <tr> <td>LNAV/VNAV DA</td> <td colspan="4">300/24 253 (300-½)</td> </tr> <tr> <td>LNAV MDA</td> <td>380/24</td> <td>333 (400-½)</td> <td>380/26</td> <td>333 (400-½)</td> </tr> <tr> <td><input checked="" type="checkbox"/> CIRCLING</td> <td>480-1 433 (500-1)</td> <td>500-1 453 (500-1)</td> <td>720-2 673 (700-2)</td> <td>720-2¼ 673 (700-2¼)</td> </tr> </table>	CATEGORY	A	B	C	D	LPV DA**	247/18 200 (200-½)				LNAV/VNAV DA	300/24 253 (300-½)				LNAV MDA	380/24	333 (400-½)	380/26	333 (400-½)	<input checked="" type="checkbox"/> CIRCLING	480-1 433 (500-1)	500-1 453 (500-1)	720-2 673 (700-2)	720-2¼ 673 (700-2¼)
CATEGORY	A	B	C	D																						
LPV DA**	247/18 200 (200-½)																									
LNAV/VNAV DA	300/24 253 (300-½)																									
LNAV MDA	380/24	333 (400-½)	380/26	333 (400-½)																						
<input checked="" type="checkbox"/> CIRCLING	480-1 433 (500-1)	500-1 453 (500-1)	720-2 673 (700-2)	720-2¼ 673 (700-2¼)																						

NE-1, 03 OCT 2024 to 31 OCT 2024

NE-1, 03 OCT 2024 to 31 OCT 2024