

ACK VOR/DME <b>116.2</b> Chan <b>109</b>	APP CRS <b>240°</b>	Rwy Idg <b>6303</b> TDZE <b>48</b> Apt Elev <b>48</b>
--	------------------------	---

# VOR RWY 24

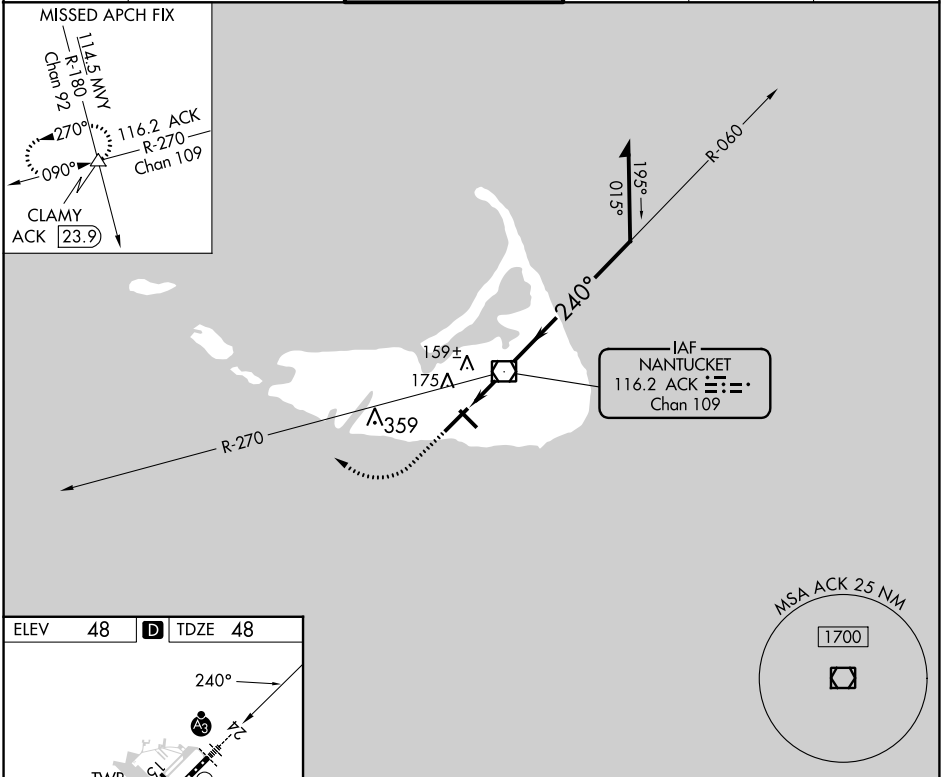
NANTUCKET MEML (ACK)

**⚠** When local altimeter setting not received, use Hyannis altimeter setting and increase all MDA 80 feet; increase S-24 Cat C visibility to RVR 4000; increase Circling Cats C/D visibility ¼ SM. VDP NA when using Hyannis altimeter setting. For Inoperative SSALR, increase S-24 Cat D visibility to RVR 6000.

**SSALR**  
**A3**

**MISSED APPROACH:** Climb to 700 then climbing right turn to 2500 via heading 310° and ACK VOR/DME R-270 to CLAMY INT/ACK 23.9 DME and hold.

ATIS <b>127.5</b>	BOSTON APP CON <b>126.1 318.1</b>	NANTUCKET TOWER ★ <b>118.3</b> (CTAF) <b>0</b>	GND CON <b>132.5</b>	CLNC DEL <b>119.375</b>	UNICOM <b>122.95</b>
----------------------	--------------------------------------	---	-------------------------	----------------------------	-------------------------



ELEV <b>48</b>	<b>D</b>	TDZE <b>48</b>			
TDZ/CL Rwy 24 REIL Rws 15 and 33 MIRL Rwy 15-33 HIRL Rwy 6-24 <b>0</b>					
FAF to MAP 1.9 NM					
Knots	60	90	120	150	180
Min:Sec	1:54	1:16	0:57	0:46	0:38

700	2500	CLAMY	ACK R-270	ACK VOR/DME	Remain within 10 NM
↑	hdg 310°	△		6000	
		ACK 0.9	ACK 1.9	3.47° TCH 48	VGSI and descent angles not coincident (VGSI Angle 3.00/TCH 48).
CATEGORY		A	B	C	D
S-24		440/24 393 (400-½)			440/50 393 (400-1)
<b>C</b> CIRCLING	480-1 433 (500-1)	500-1 453 (500-1)	720-2 673 (700-2)	720-2¼ 673 (700-2¼)	

NE-1, 03 OCT 2024 to 31 OCT 2024

NE-1, 03 OCT 2024 to 31 OCT 2024