


WAAS CH 42814 W14A	APP CRS 141°	Rwy Idg 6007 TDZE 64 Apt Elev 64
--	------------------------	---


RNAV (GPS) RWY 14

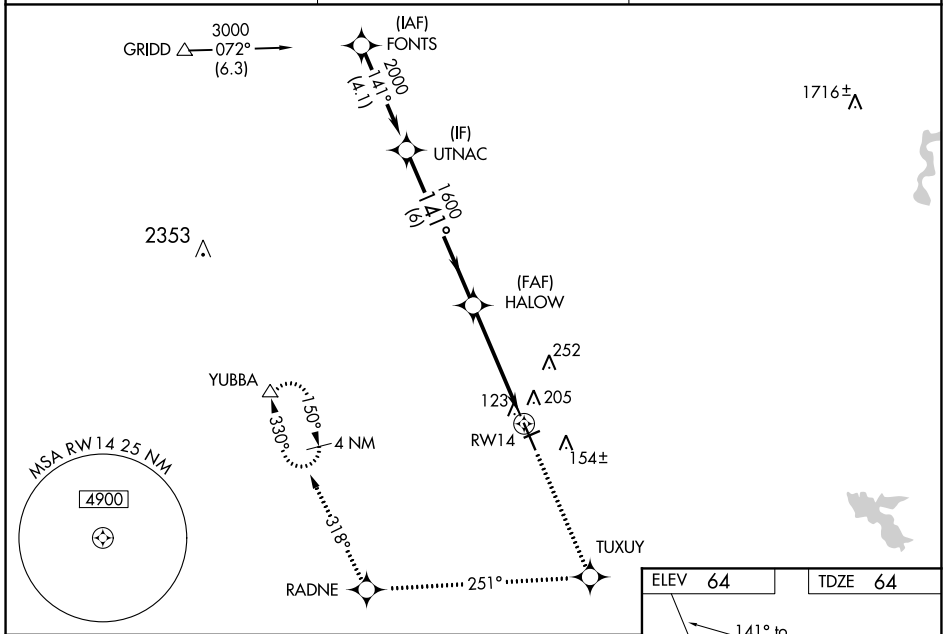
YUBA COUNTY (MYV)

⚠ For uncompensated Baro-VNAV systems, LNAV/VNAV NA below -1.5°C (5°F) or above 54°C (130°F). DME/DME RNP-0.3 NA. Helicopter visibility reduction below 3/4 SM NA. Baro-VNAV and VDP NA when using Lincoln altimeter setting. When local altimeter setting not received, use Lincoln altimeter setting and increase LPV DA to 308 feet, LNAV/VNAV DA to 514 feet and all MDA 60 feet; increase LNAV/VNAV all Cats visibility 1/8 mile, LNAV Cats C/D visibility 1/8 mile. Inop table does not apply to LPV all Cats. For inop MALSR increase LNAV Cats A/B visibility 1/4 mile. Night landing: Rwy 5, 23 NA.

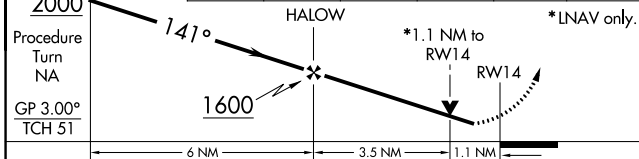
MALSR


MISSED APPROACH:
 Climb to 4000 direct TUXUY and via track 251° to RADNE and via track 318° to YUBBA and hold.

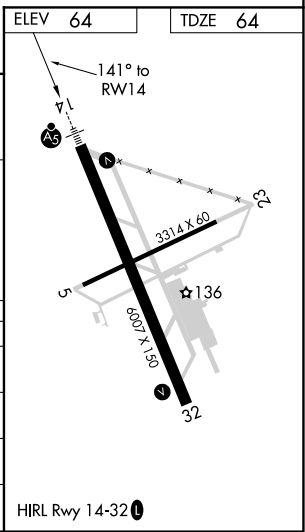
ASOS 118.475	NORCAL APP CON 125.4 259.1	UNICOM 123.05 (CTAF) 
------------------------	--------------------------------------	--



UTNAC	4000	TUXUY	tr 251°	RADNE	tr 318°	YUBBA
-------	------	-------	---------	-------	---------	-------



CATEGORY	A	B	C	D
LPV DA		264-3/4	200 (200-3/4)	
LNAV/VNAV DA		470-7/8	406 (500-7/8)	
LNAV MDA		500-3/4	436 (500-3/4)	
CIRCLING	540-1	476 (500-1)	540-1 1/2 476 (500-1 1/2)	620-2 556 (600-2)



SW-2, 03 OCT 2024 to 31 OCT 2024

SW-2, 03 OCT 2024 to 31 OCT 2024