


VOR/DME MCW 114.9 Chan 96	APP CRS 356°	Rwy Idg 6401 TDZE 1193 Apt Elev 1213
---	------------------------	---

VOR RWY 36

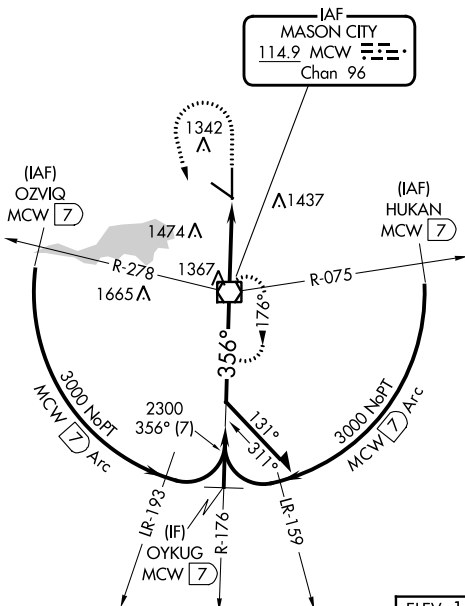
MASON CITY MUNI (MCW)

V VDP NA when using Charles City altimeter setting. When local altimeter setting not received, use Charles City altimeter setting and increase all MDA 100 feet and increase S-36 Cat C/D and Circling Cat C visibility 1/4 mile.

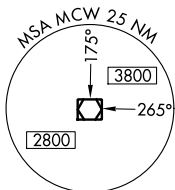
MALS 

MISSED APPROACH: Climb to 2500 then climbing left turn to 3000 direct MCW VOR/DME and hold.

ASOS 120.3	MINNEAPOLIS CENTER 127.3 257.675	UNICOM 123.0 (CTAF)
----------------------	--	-------------------------------

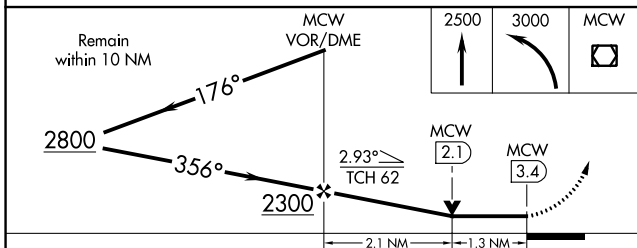


△1978



NC-3, 03 OCT 2024 to 31 OCT 2024

NC-3, 03 OCT 2024 to 31 OCT 2024



ELEV 1213	TDZE 1193	
REIL Rwy 12	MIRL Rwy 12-30	HIRL Rwy 18-36

Detailed approach diagram showing the final descent and landing. Key altitudes and distances are indicated.

FAF to MAP 3.4 NM					
Knots	60	90	120	150	180
Min:Sec	3:24	2:16	1:42	1:22	1:08

CATEGORY	A	B	C	D
S-36	1640-3/4	447 (500-3/4)	1640-7/8	447 (500-7/8)
CIRCLING	1680-1 467 (500-1)	1760-1 547 (600-1)	1780-1 1/2 567 (600-1 1/2)	1780-2 567 (600-2)