

LOC I-RIW 110.5	APP CRS 284°	Rwy ldg TDZE Apt Elev	8204 5459 5516
---------------------------	------------------------	-----------------------------	---

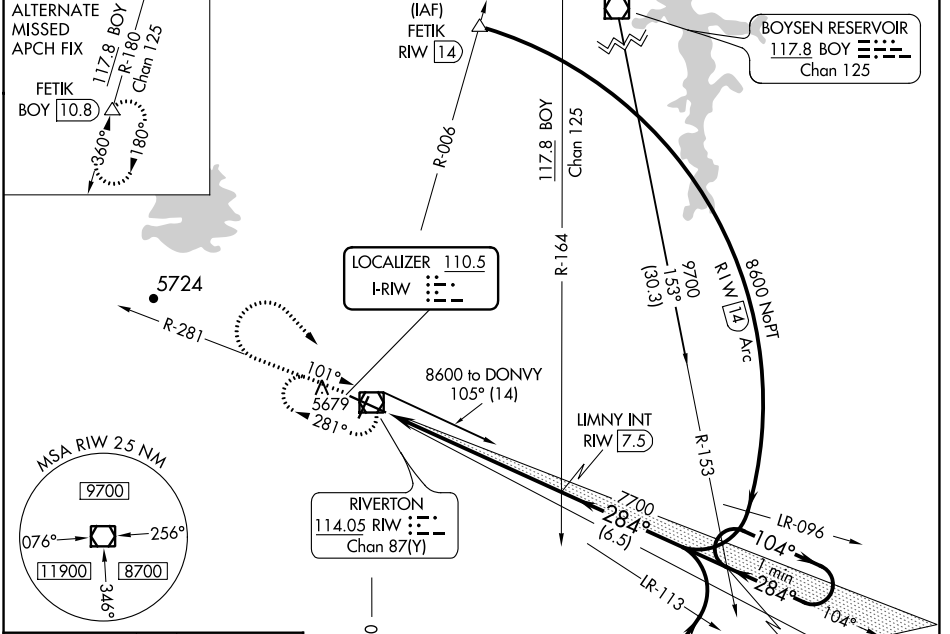
ILS or LOC RWY 28

CENTRAL WYOMING RGNL (RIW)

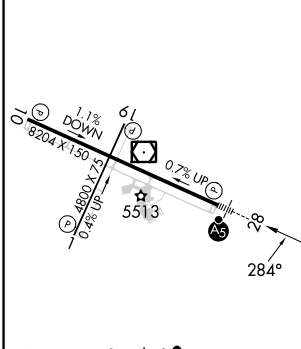
NA When local altimeter setting not received, use Lander altimeter setting: increase DA to 5713 feet; increase all MDA 60 feet and S-LOC 28 Cat C and D visibility ¼ mile. For inop MALSRL, when using Lander altimeter setting, increase S-ILS 28 all Cats visibility to ¾ mile and S-LOC 28 Cat C and D visibility to 1 ½ mile. VDP NA when using Lander altimeter setting.

MALSRL MISSED APPROACH: Climb to 6800 then climbing right turn to 7700 direct RIW VOR/DME and hold, continue climb-in-hold to 7700.

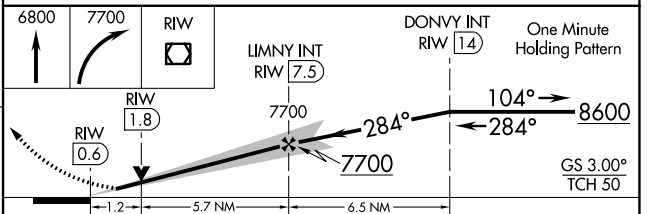
ASOS 121.425	SALT LAKE CENTER 133.25 285.6	UNICOM 122.8 (CTAF)
------------------------	---	-------------------------------



ELEV 5516	D	TDZE 5459
-----------	---	-----------



REIL Rwy 1, 10 and 19	MIRL Rwy 1-19	HIRL Rwy 10-28			
FAF to MAP 6.9 NM					
Knots	60	90	120	150	180
Min:Sec	6:54	4:36	3:27	2:46	2:18



CATEGORY	A	B	C	D
S-ILS 28	5659-½ 200 (200-½)			
S-LOC 28	5880-½ 421 (400-½)	5880-¾ 421 (400-¾)		
CIRCLING	6000-1 484 (500-1)	6000-1½ 484 (500-1½)	6120-2 604 (700-2)	

NW-1, 03 OCT 2024 to 31 OCT 2024

NW-1, 03 OCT 2024 to 31 OCT 2024