

LOC/DME I-SLV <b>110.9</b> Chan <b>46</b>	APP CRS <b>126°</b>	Rwy Idg TDZE Apt Elev	12R <b>8587</b>	12L <b>8831</b>
---	------------------------	-----------------------------	--------------------	--------------------

# ILS or LOC RWY 12R

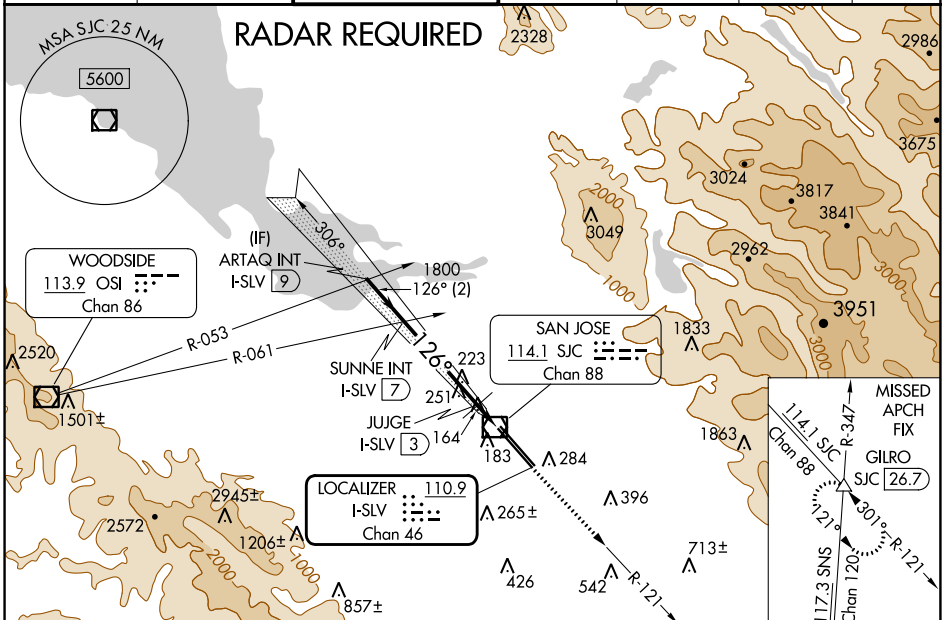
NORMAN Y MINETA SAN JOSE INTL (SJC)

**DME required.**  
For inoperative MALS, increase S-LOC 12R  
Cat C/D visibility to 1 mile.

MALS  
Rwy 12R

**MISSED APPROACH:** Climb to 500 then climb to 4000  
on SJC VOR/DME R-121 to GILRO/SJC 26.7 DME  
and hold.

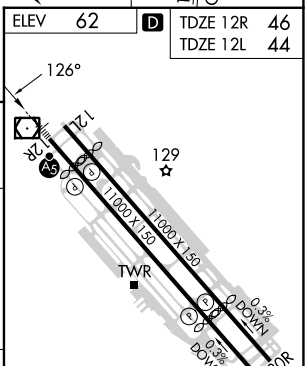
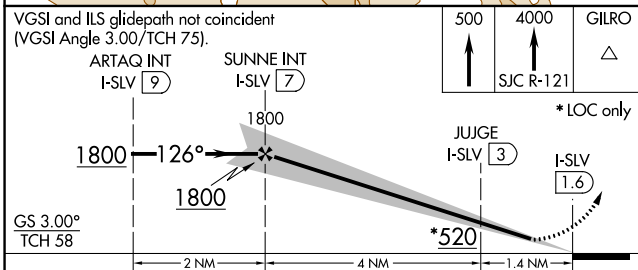
D-ATIS <b>126.95</b>	NORCAL APP CON <b>120.1 290.25</b>	SAN JOSE TOWER * <b>124.0 (CTAF) 0 257.6</b>	GND CON <b>121.7</b>	CLNC DEL <b>118.0</b>	CPDLC	UNICOM <b>122.95</b>
-------------------------	---------------------------------------	---	-------------------------	--------------------------	-------	-------------------------



SW-2, 03 OCT 2024 to 31 OCT 2024

SW-2, 03 OCT 2024 to 31 OCT 2024

ELEV 62	TDZE 12R 46	TDZE 12L 44
---------	-------------	-------------



CATEGORY	A	B	C	D
S-ILS 12R	251-1/2		205 (200-1/2)	
S-LOC 12R	420-1/2 374 (400-1/2)		420-5/8 374 (400-5/8)	
SIDESTEP RWY 12L	600-1 556 (600-1)		600-1 556 (600-1 1/2) 600-2 556 (600-2)	

REIL Rwy 12L  
HIRL Rwy 12L-30R and 12R-30L