

WAAS CH 90106 W12A	APP CRS 126°	Rwy ldg TDZE Apt Elev	12R 8587 46 62	12L 8831 44 62
--	------------------------	-----------------------------	--	--

RNAV (GPS) Y RWY 12R

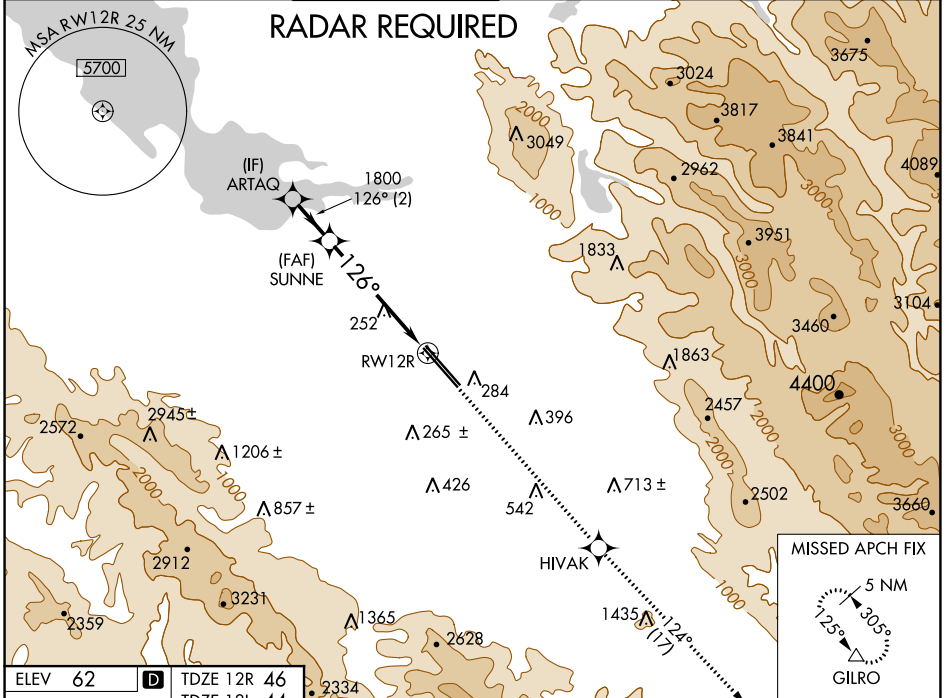
NORMAN Y MINETA SAN JOSE INTL (SJC)

For uncompensated Baro-VNAV systems, LNAV/VNAV NA below -1°C (31°F) or above 54°C (130°F). DME/DME RNP-0.3 NA. For inoperative MALS, increase LNAV/VNAV all Cats visibility to 1 mile and LNAV Cats C/D visibility to 1½ mile.

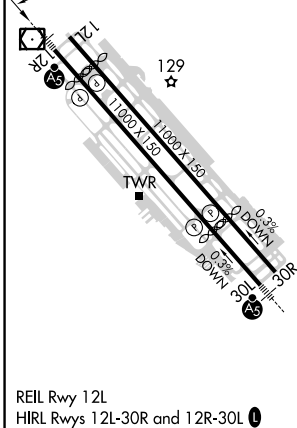
MALS Rwy 12R
AS

MISSED APPROACH: Climb to 4600 direct HIVAK and on track 124° to GILRO and hold.

D-ATIS 126.95	NORCAL APP CON 120.1 290.25	SAN JOSE TOWER ★ 124.0 (CTAF) 0 257.6	GND CON 121.7	CLNC DEL 118.0	CPDLC	UNICOM 122.95
-------------------------	---------------------------------------	---	-------------------------	--------------------------	-------	-------------------------



ELEV 62	D TDZE 12R 46	TDZE 12L 44
---------	---------------	-------------



VGSI and RNAV glidepath not coincident (VGSI Angle 3.00/TCH 75).

ARTAQ	SUNNE	4600	HIVAK	tr 124°	GILRO
1800	1800	1800			
GP 3.00° TCH 58		*1.3 NM to RWY 12R			
2 NM		4.1 NM		1.3 NM	
CATEGORY	A	B	C	D	
LPV DA	246-½		200 (200-½)		
LNAV/VNAV DA	371-⅝ 325 (400-⅝)		371-1 325 (400-1)		
LNAV MDA	520-½ 474 (500-½)		520-1 474 (500-1)		
SIDESTEP 12L	520-1 476 (500-1)		520-1½ 476 (500-1½)		520-2 476 (500-2)

SW-2, 03 OCT 2024 to 31 OCT 2024

SW-2, 03 OCT 2024 to 31 OCT 2024