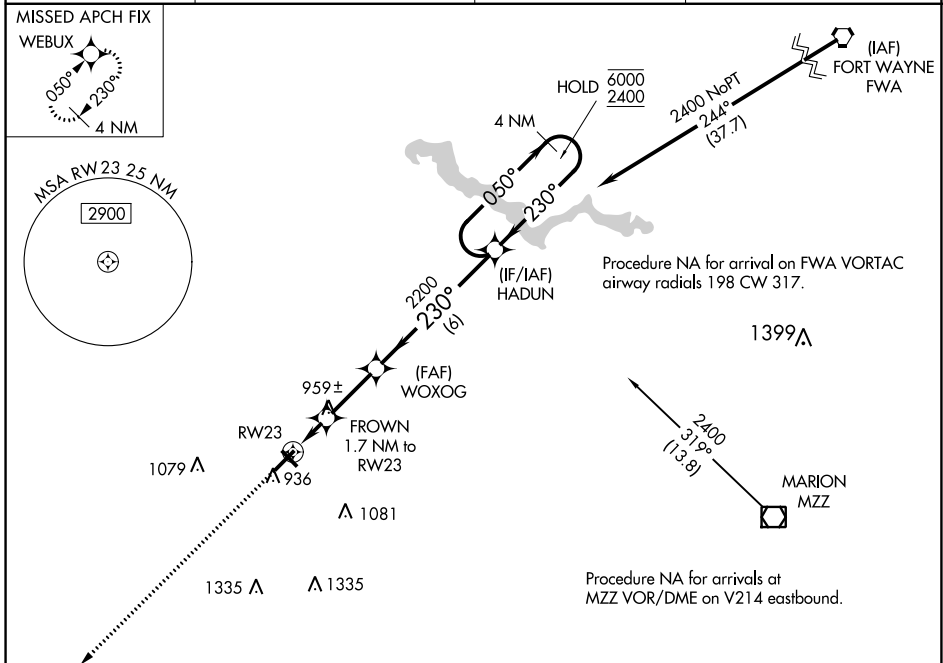


WAAS CH <b>40119</b> <b>W23A</b>	APP CRS <b>230°</b>	Rwy Idg TDZE Apt Elev	<b>6001</b> <b>827</b> <b>832</b>
--	------------------------	-----------------------------	---

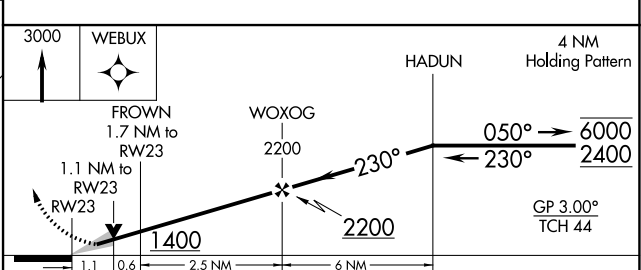
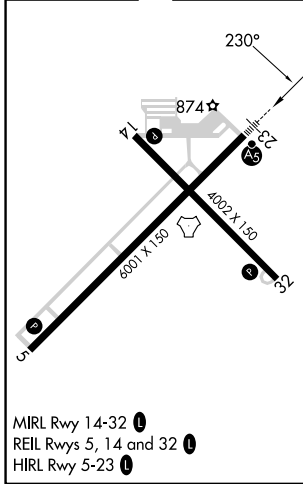
# RNAV (GPS) RWY 23

KOKOMO MUNI (OKK)

RNP APCH - GPS.		MALSR	MISSED APPROACH: Climb to 3000 direct WEBUX and hold.
<p>▼ For uncompensated Baro-VNAV systems, LNAV/VNAV NA below -16°C or above 54°C.</p>			
AWOS-3PT <b>128.675</b>	GRISSOM APP CON * <b>121.05 338.275</b>	CLNC DEL <b>120.0</b>	UNICOM <b>123.0 (CTAF) 0</b>



ELEV 832	TDZE 827
----------	----------



CATEGORY	A	B	C	D
LPV DA		1027-1/2	200 (200-1/2)	
LNAV/VNAV DA		1224-5/8	397 (400-5/8)	
LNAV MDA	1220-1/2	393 (400-1/2)	1220-5/8	393 (400-5/8)
CIRCLING	1260-1 428 (500-1)	1300-1 468 (500-1)	1400-1 1/2 568 (600-1 1/2)	1420-2 588 (600-2)