

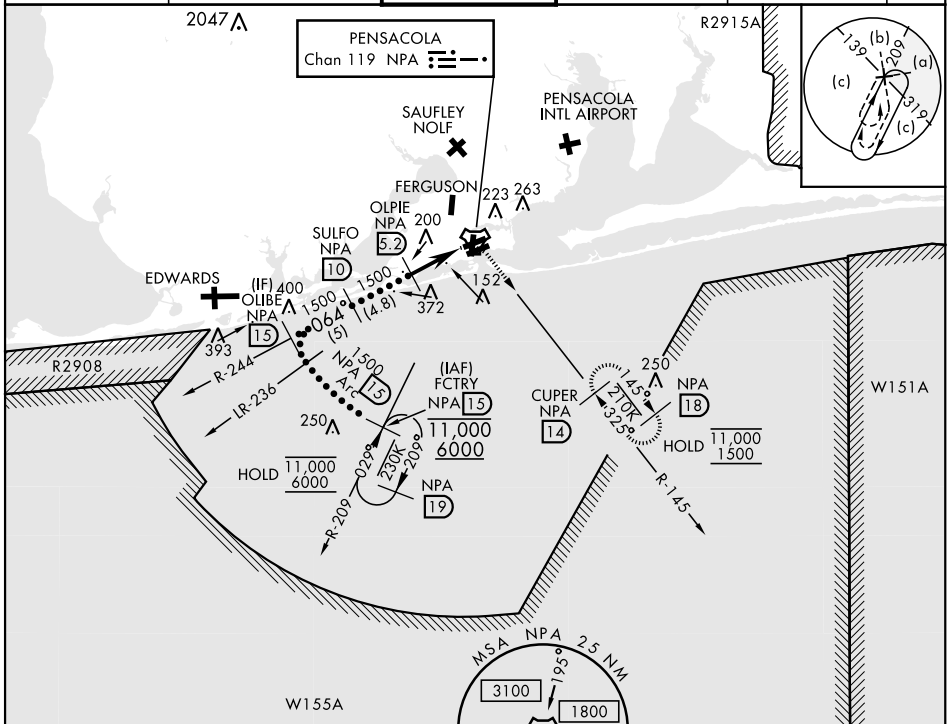
# HI-TACAN Z RWY 7L

TACAN NPA Chan <b>119</b>	APCH CRS <b>064°</b>	Rwy ldg TDZE Arprt Elev	<b>8001</b> <b>23</b> <b>28</b>
------------------------------	-------------------------	-------------------------------	---------------------------------------

AL-736 [USN] PENSACOLA NAS (FORREST SHERMAN FLD) (KNPA)

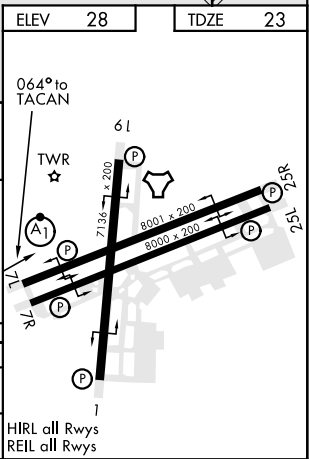
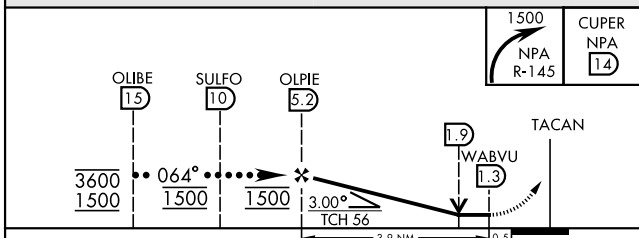
RADAR required. * When ALS inop, increase vis to 1 ½ miles.	ALSF-1 	MISSED APPROACH: Climbing right turn to 1500 via NPA TACAN R-145 to CUPER and hold.
--	------------	---

ATIS <b>124.35 266.8</b>	PENSACOLA APP CON <b>120.65 270.8</b>	SHERMAN TOWER <b>120.7 340.2</b>	GND CON <b>121.7 336.4</b>	CLNC DEL <b>134.1 268.7</b>	ASR/ PAR
-----------------------------	--	-------------------------------------	-------------------------------	--------------------------------	-------------



ELEV	28	TDZE	23
------	----	------	----

EMERG SAFE ALT 100 NM 3100



CATEGORY	C	D	E
S-7L *	440-¾	417 (500-¾)	
CIRCLING	540-1 ½ 512 (600-1 ½)	580-2	552 (600-2)

PENSACOLA, FLORIDA 30°21'N-87°19'W PENSACOLA NAS (FORREST SHERMAN FLD) (KNPA)

Orig 02DEC21

# HI-TACAN Z RWY 7L

SE-3, 03 OCT 2024 to 31 OCT 2024

SE-3, 03 OCT 2024 to 31 OCT 2024