

HI-VOR Z RWY 19

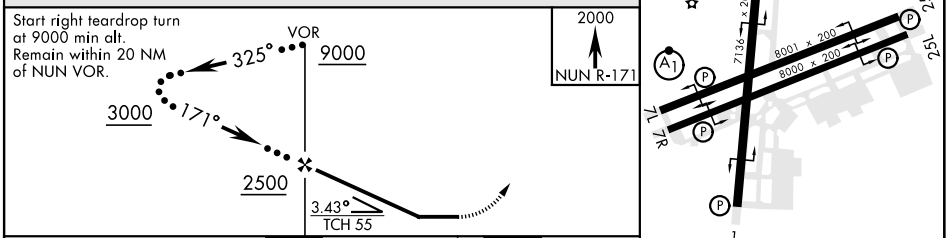
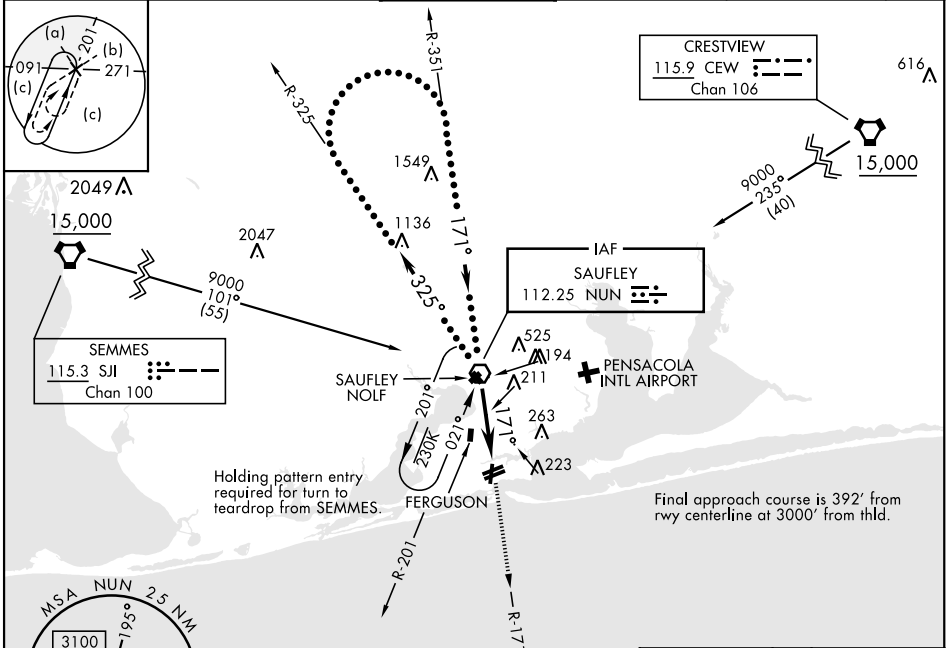
VOR NUN 112.25	APCH CRS 171°	Rwy Ldg TDZE Arprt Elev 7136 22 28	AL-736 [USN] PENSACOLA NAS (FORREST SHERMAN FLD) (KNPA)
--------------------------	-------------------------	--	---

RADAR required.

Procedure not available when Pensacola South Military Operating Area (MOA) is active.

MISSED APPROACH: Climb to 2000 via NUN VOR R-171. Expect RADAR vectors within 3 NM of MAP.

ATIS 124.35 266.8	PENSACOLA APP CON 120.65 270.8	SHERMAN TOWER 120.7 340.2	GND CON 121.7 336.4	CLNC DEL 134.1 268.7	ASR/ PAR
-----------------------------	--	-------------------------------------	-------------------------------	--------------------------------	-------------



CATEGORY	C	D	E
	S-19	500-1 $\frac{1}{8}$ 478 (500-1 $\frac{1}{8}$)	
CIRCLING	540-1 $\frac{1}{2}$	580-2	552 (600-2)
	512 (600-1 $\frac{1}{2}$)		

HIRL all Rwys REIL all Rwys	FAF to MAP 6.0 NM					
	Knots	120	140	160	180	200
	Min:Sec	3:00	2:34	2:15	2:00	1:48

PENSACOLA, FLORIDA 30°21'N-87°19'W PENSACOLA NAS (FORREST SHERMAN FLD) (KNPA)

Orig 02DEC21

HI-VOR Z RWY 19

SE-3, 03 OCT 2024 to 31 OCT 2024

SE-3, 03 OCT 2024 to 31 OCT 2024