

PENSACOLA, FLORIDA

ILS or RNAV (GPS) Y RWY 7L

LOC/DME I-NPA 109.3 Chan 30	APCH CRS 069°	Rwy Idg TDZE Arprt Elev 8001 23 28
---	-------------------------	--

[USN]

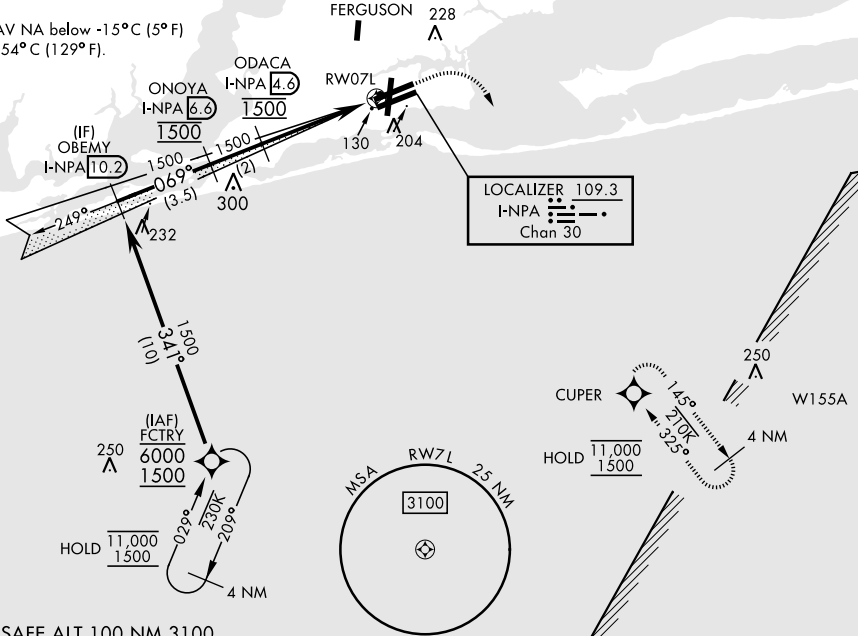
PENSACOLA NAS (FORREST SHERMAN FLD) (KNPA)

RNP APCH. RNAV1 - GPS for ILS procedure.		ALSF-1 	MISSED APPROACH: Climb to 600, then climbing right turn to 1500 direct CUPER and hold.		
RADAR required					
<p>▼ * When ALS inop, increase vis to ¾ mile.</p>					
ATIS 124.35 266.8	APP CON 120.65 270.8	SHERMAN TOWER 120.7 340.2	GND CON 121.7 336.4	CLNC DEL 134.1 268.7	ASR/PAR

**When ALS inop, increase CAT ABC vis to ¾ mile; CAT DE vis to ¾ mile.
*** When ALS inop, increase vis to 1 mile.

PENSACOLA INTL AIRPORT

Baro VNAV NA below -15°C (5°F) or above 54°C (129°F).



EMERG SAFE ALT 100 NM 3100

	FCTRY	OBEMY I-NPA 10.2	ONOCA I-NPA 6.6	ODACA I-NPA 4.6	600 cfs 069°	1500	CUPER	ELEV 28	TDZE 23
	6000 1500	341° 1500	069° 1500	1500	0.9 NM to RW7L				
	GS 3.00° TCH 55				4.5 NM				
CATEGORY	A	B	C	D	E				
S-ILS 7L *	223-½		200	(200-½)					
LNAV/VNAV DA**	274-½	251 (300-½)	280-½	291-½	295-½				
			257 (300-½)	268 (300-½)	272 (300-½)				
LNAV MDA***	380-½		357 (400-½)	380-⅝		357 (400-⅝)			
CIRCLING	520-1	492 (500-1)	540-1½	600-2	640-2¼	HIRL all rwys			
			512 (600-1½)	572 (600-2)	612 (700-2¼)	REIL all rwys			

PENSACOLA, FLORIDA
Amd 5 11JUL24

30°21'N-87°19'W

PENSACOLA NAS (FORREST SHERMAN FLD) (KNPA)

ILS or RNAV (GPS) Y RWY 7L

SE-3, 03 OCT 2024 to 31 OCT 2024

SE-3, 03 OCT 2024 to 31 OCT 2024