

PENSACOLA, FLORIDA

RNAV (GPS) RWY 19

APCH CRS 187°	Rwy Idg 7136
	TDZE 22
	Arpt Elev 28

AL-736 (USN)

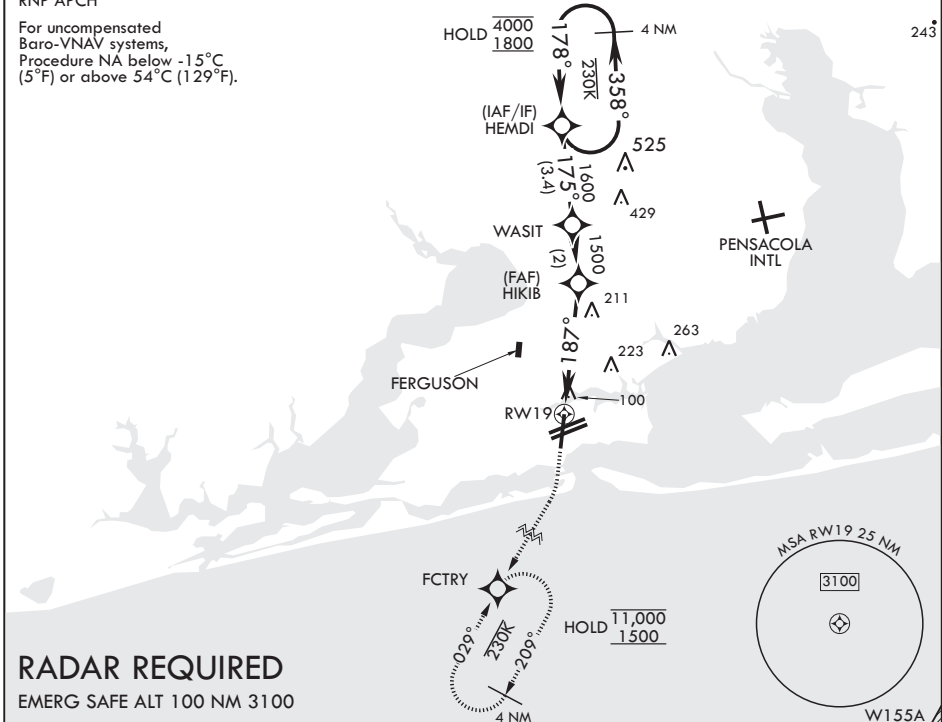
PENSACOLA NAS (FORREST SHERMAN FLD) (KNPA)

▼ MISSED APPROACH: Climb to 800 then climbing right turn to 1500 direct FCTRY and hold.

ATIS 124.35 266.8	APP CON 120.65 270.8	SHERMAN TOWER 120.7 340.2	SHERMAN GND CON 121.7 336.4	SHERMAN CLNC DEL 134.1 268.7	ASR/PAR
-----------------------------	--------------------------------	-------------------------------------	---------------------------------------	--	---------

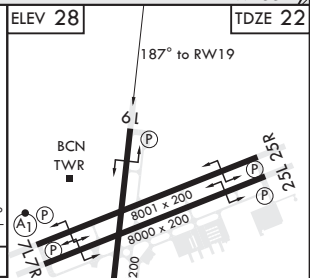
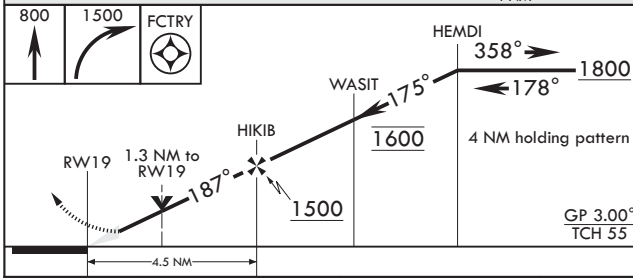
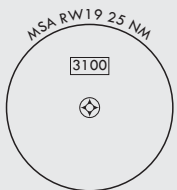
RNP APCH

For uncompensated Baro-VNAV systems, Procedure NA below -15°C (5°F) or above 54°C (129°F).



RADAR REQUIRED

EMERG SAFE ALT 100 NM 3100



CATEGORY	A	B	C	D	E
LNAV/VNAV DA	281- ³ / ₄ 259 (300- ³ / ₄)	292- ⁷ / ₈ 270 (300- ⁷ / ₈)	300- ⁷ / ₈ 278 (300- ⁷ / ₈)	311- ⁷ / ₈	289 (300- ⁷ / ₈)
LNAV MDA	500-1	478 (500-1)	500-1 ¹ / ₂	478	(500-1 ¹ / ₂)
C CIRCLING	520-1	492 (500-1)	540-1 ¹ / ₂ 512 (600-1 ¹ / ₂)	580-2	552 (600-2)

PENSACOLA, FLORIDA

30°21'N - 87°19'W PENSACOLA NAS (FORREST SHERMAN FLD) (KNPA)

Amdt 5 02DEC21

RNAV (GPS) RWY 19

SE-3, 03 OCT 2024 to 31 OCT 2024

SE-3, 03 OCT 2024 to 31 OCT 2024

HIRL all Rwys
REIL all Rwys