

PENSACOLA, FLORIDA

# RNAV (GPS) RWY 25L

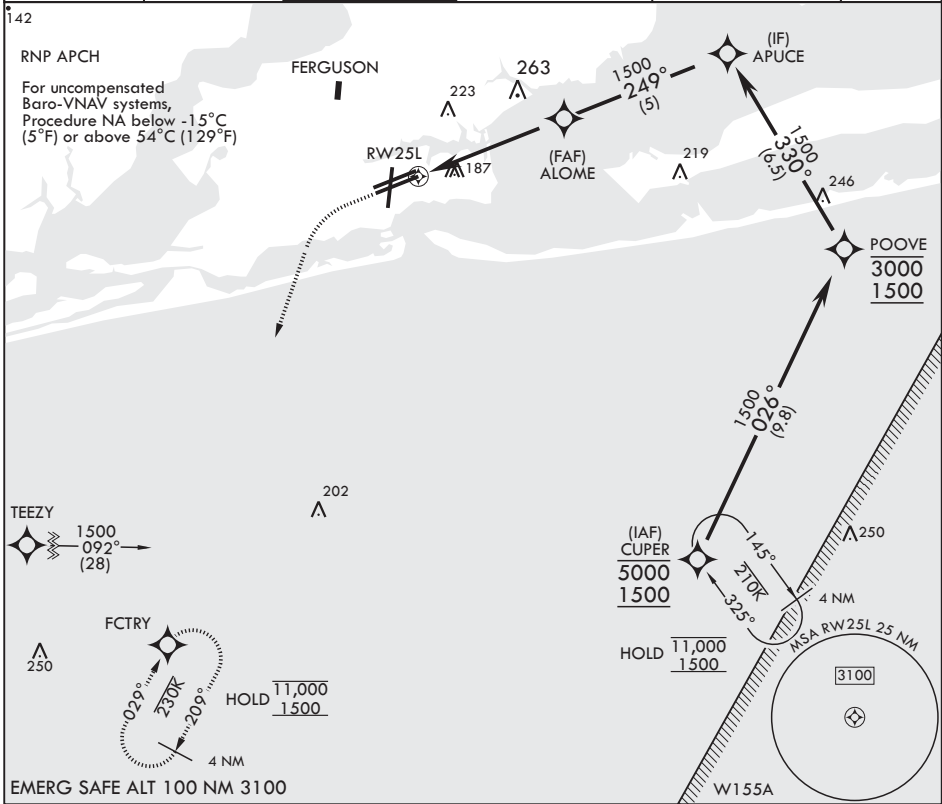
APCH CRS <b>249°</b>	Rwy Idg <b>22</b>	TDZE <b>28</b>	Arprt Elev <b>28</b>
-------------------------	----------------------	-------------------	-------------------------

AL-736 (USN)

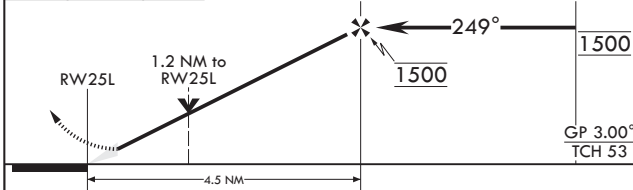
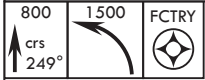
PENSACOLA NAS (FORREST SHERMAN FLD) (KNPA)

**▽** MISSED APPROACH: Climb to 800 then climbing left turn to 1500 direct FCTRY and hold.

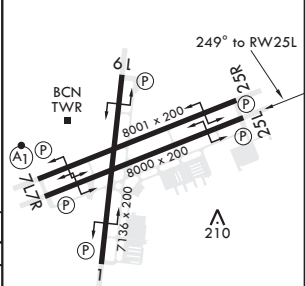
ATIS <b>124.35 266.8</b>	APP CON <b>120.65 270.8</b>	SHERMAN TOWER <b>120.7 340.2</b>	SHERMAN GND CON <b>121.7 336.4</b>	SHERMAN CLNC DEL <b>134.1 268.7</b>	ASR/PAR
-----------------------------	--------------------------------	-------------------------------------	---------------------------------------	--	---------



EMERG SAFE ALT 100 NM 3100



ELEV 28	TDZE 22
---------	---------



CATEGORY	A	B	C	D
LNAV/VNAV DA	440-1 1/8	418 (500-1)	418 (500-1 1/8)	418 (500-1 1/8)
LNAV MDA	440-1	418 (500-1)	440-1 1/8	418 (500-1 1/8)
<b>C</b> CIRCLING	520-1	492 (500-1)	540-1 1/2 512 (600-1 1/2)	580-2 552 (600-2)

HIRL all Rwy's  
REIL all Rwy's

PENSACOLA, FLORIDA

30°21'N - 87°19'W PENSACOLA NAS (FORREST SHERMAN FLD) (KNPA)

Amdt 3 02DEC21

# RNAV (GPS) RWY 25L

SE-3, 03 OCT 2024 to 31 OCT 2024

SE-3, 03 OCT 2024 to 31 OCT 2024