

TACAN Y RWY 25L

TACAN NPA Chan 119	APCH CRS 266°	Rwy Idg 8000	TDZE 22	Arprt Elev 28
-----------------------	------------------	-----------------	------------	------------------

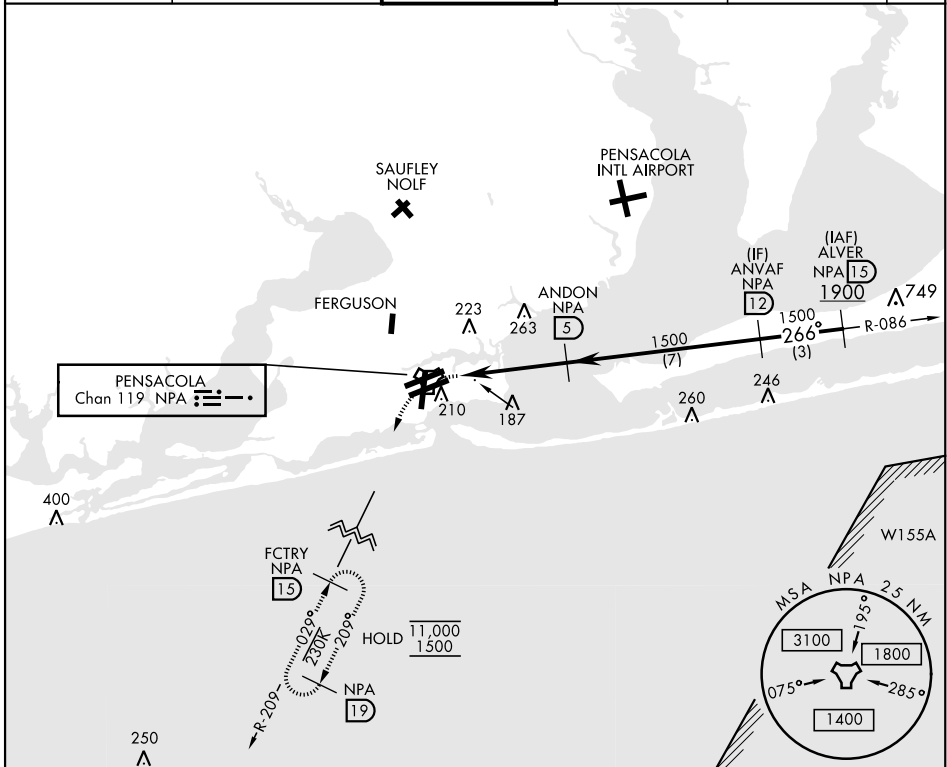
AL-736 [USN]

PENSACOLA NAS (FORREST SHERMAN FLD) (KNPA)

RADAR required.

MISSED APPROACH: Climbing left turn to 1500 via NPA TACAN R-209 to FCTRY and hold.

ATIS 124.35 266.8	PENSACOLA APP CON 120.65 270.8	SHERMAN TOWER 120.7 340.2	GND CON 121.7 336.4	CLNC DEL 134.1 268.7	ASR/ PAR
----------------------	-----------------------------------	------------------------------	------------------------	-------------------------	-------------

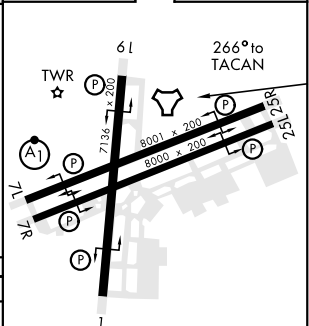
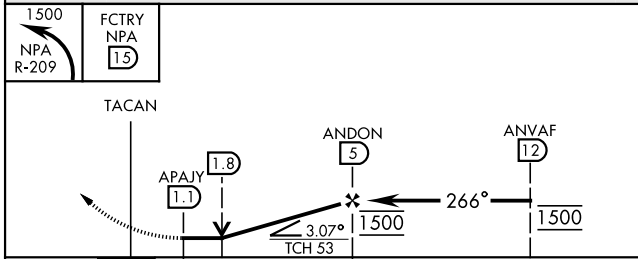


SE-3, 03 OCT 2024 to 31 OCT 2024

SE-3, 03 OCT 2024 to 31 OCT 2024

EMERG SAFE ALT 100 NM 3100

ELEV	28	TDZE	22
------	----	------	----



CATEGORY	A	B	C	D	E
S-25L	440-1	418 (500-1)	440-1½	418 (500-1½)	
CIRCLING	520-1	492 (500-1)	540-1½	512 (600-1½)	580-2 552 (600-2)

HIRL all Rwys
REIL all Rwys

TACAN Y RWY 25L