

PENSACOLA, FLORIDA

# TACAN Y RWY 7L

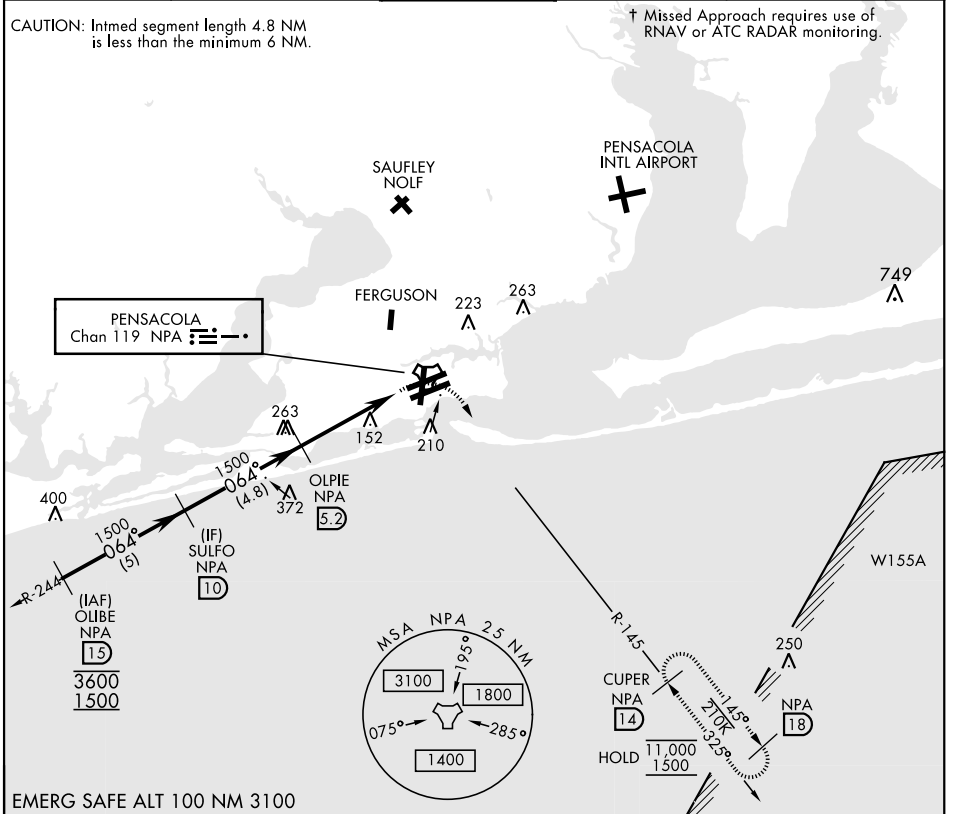
TACAN NPA Chan <b>119</b>	APCH CRS <b>064°</b>	Rwy Idg TDZE Arprt Elev	<b>8001</b> <b>23</b> <b>28</b>
------------------------------	-------------------------	-------------------------------	---------------------------------------

AL-736 [USN]

PENSACOLA NAS (FORREST SHERMAN FLD) (KNPA)

RADAR required. ▼ * When ALS inop, increase CAT AB vis to 1 mile, CAT CDE vis to 1 1/8 miles.		ALS F-1 	† MISSED APPROACH: Climbing right turn to 1500 via NPA TACAN R-145 to CUPER and hold.
--	--	-------------	---

ATIS <b>124.35 266.8</b>	PENSACOLA APP CON <b>120.65 270.8</b>	SHERMAN TOWER <b>120.7 340.2</b>	GND CON <b>121.7 336.4</b>	CLNC DEL <b>134.1 268.7</b>	ASR/PAR
-----------------------------	--	-------------------------------------	-------------------------------	--------------------------------	---------



SE-3, 03 OCT 2024 to 31 OCT 2024

SE-3, 03 OCT 2024 to 31 OCT 2024

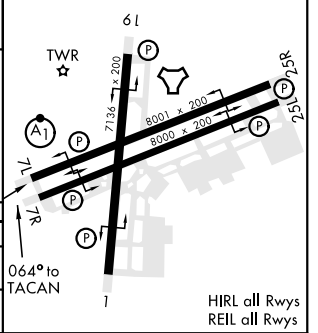
EMERG SAFE ALT 100 NM 3100

SULFO 10		OLPIE 5.2		TACAN		ELEV 28		TDZE 23			
1500		1500		3.00° TCH 56		CUPER NPA 14		CUPER NPA 14			
CATEGORY		A		B		C		D		E	
S-7L *		440-1/2		417 (500-1/2)		440-3/4		417 (500-3/4)			
CIRCLING		520-1		492 (500-1)		540-1 1/2		512 (600-1 1/2)		580-2 552 (600-2)	

PENSACOLA, FLORIDA 30°21'N-87°19'W PENSACOLA NAS (FORREST SHERMAN FLD) (KNPA)

Orig 02DEC21

# TACAN Y RWY 7L



HIRL all Rwys REIL all Rwys