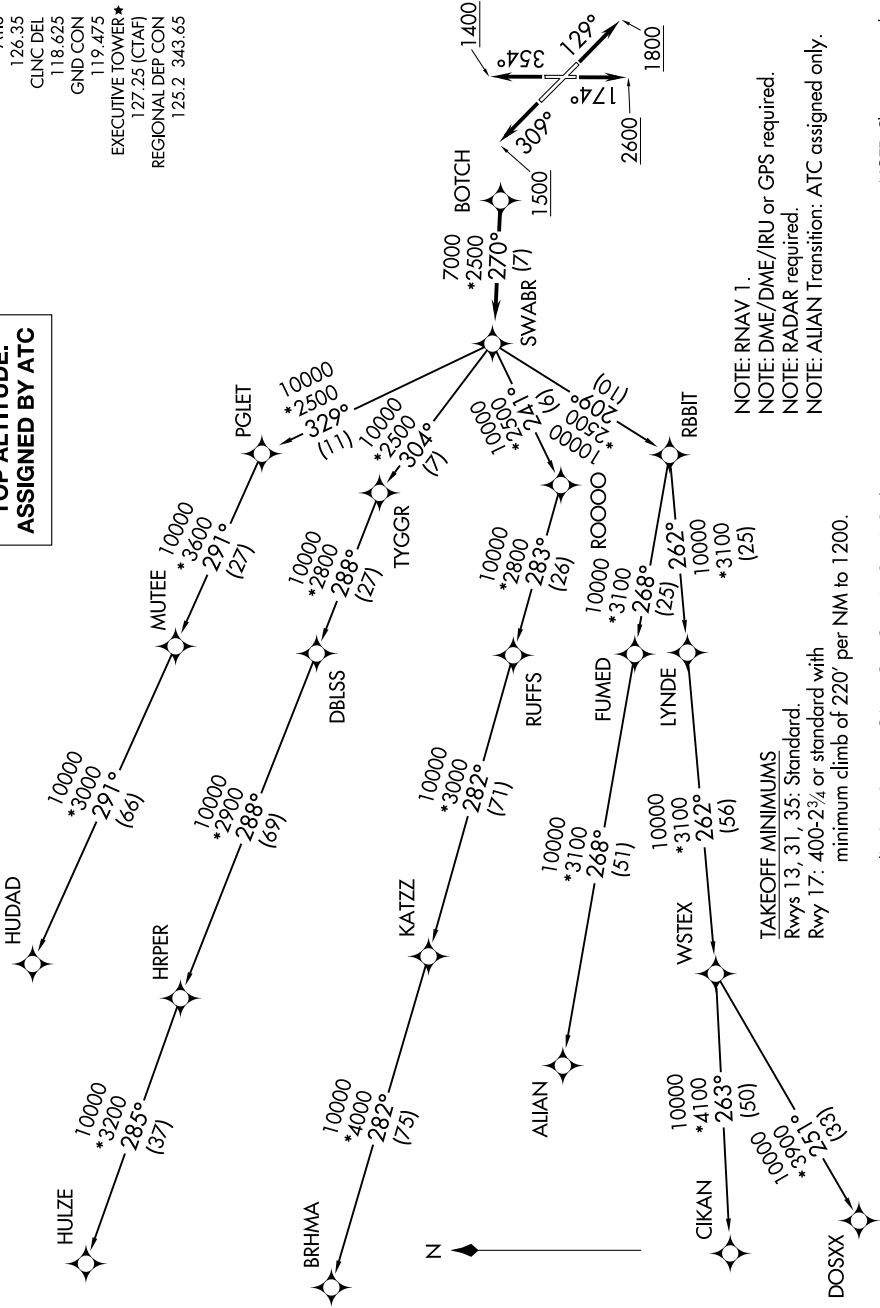


# SWABR ONE DEPARTURE (RNAV)

SC-2, 03 OCT 2024 to 31 OCT 2024

## TOP ALTITUDE: ASSIGNED BY ATC

- ATIS 126.35
- CLNC DEL 118.625
- GND CON 119.475
- EXECUTIVE TOWER\* 127.25 (CTAF)
- REGIONAL DEP CON 125.2 343.65



NOTE: RNAV 1.  
 NOTE: DME/DME/IRU or GPS required.  
 NOTE: RADAR required.  
 NOTE: ALIAN Transition: ATC assigned only.

**TAKEOFF MINIMUMS**  
 Rwy 13, 31, 35: Standard.  
 Rwy 17: 400-2¾ or standard with  
 minimum climb of 220' per NM to 1200.

NOTE: Chart not to scale.

(NARRATIVE ON FOLLOWING PAGE)

SC-2, 03 OCT 2024 to 31 OCT 2024

# SWABR ONE DEPARTURE (RNAV)