

(DORRL2.DORRL) 24081

AL-744 (FAA)

FORT LAUDERDALE/HOLLYWOOD INTL (FLL)

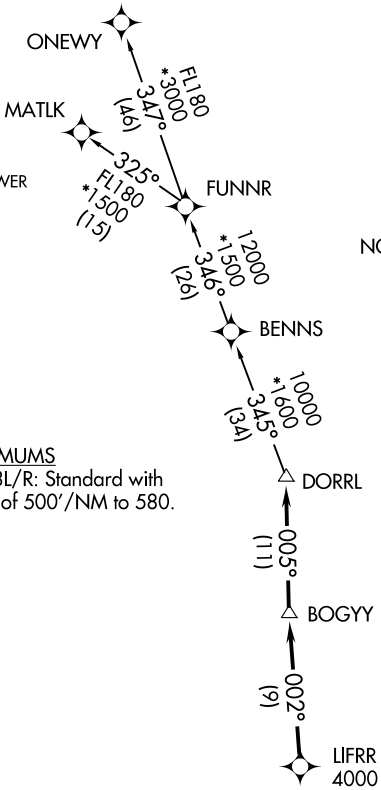
DORRL TWO DEPARTURE (RNAV)

FORT LAUDERDALE, FLORIDA

MIAMI DEP CON
 126.05 251.1
 D-ATIS
 135.0
 CLNC DEL
 128.4
 CPDLC
 GND CON
 121.4
 FORT LAUDERDALE TOWER
 119.3 257.8

RNAV 1 - DME/DME/IRU or GPS.
 RADAR required.

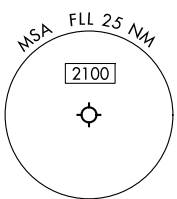
**TOP ALTITUDE:
 ASSIGNED BY ATC**



NOTE: For turbo-props/props filed at or above 13000.

TAKEOFF MINIMUMS

Rwys 10L/R, 28L/R: Standard with minimum climb of 500'/NM to 580.



NOTE: Chart not to scale.

SE-3, 03 OCT 2024 to 31 OCT 2024

SE-3, 03 OCT 2024 to 31 OCT 2024

DEPARTURE ROUTE DESCRIPTION SEE ADDITIONAL REQUIREMENTS ON AAUP

TAKEOFF RUNWAYS 10L/R: Climb on heading 096° to 580, then climbing left turn heading 060° or as assigned by ATC for vectors to cross LIFRR at or above 4000, thence. . . .

TAKEOFF RUNWAYS 28L/R: Climb on heading 276° to 580, then climbing right turn heading 305° or as assigned by ATC for vectors to cross LIFRR at or above 4000, thence. . . .

. . . .on track 002° to BOGY, then on track 005° to DORRL then on (transition), maintain altitude as assigned by ATC, expect filed altitude 10 minutes after departure.

MATLK TRANSITION (DORRL2.MATLK)
 ONEWY TRANSITION (DORRL2.ONEWY)

DORRL TWO DEPARTURE (RNAV)

FORT LAUDERDALE, FLORIDA

(DORRL2.DORRL) 21MAR24

FORT LAUDERDALE/HOLLYWOOD INTL (FLL)