

(GLADZ3.GLADZ) 24081

AL-744 (FAA)

FORT LAUDERDALE/HOLLYWOOD INTL (FLL)

GLADZ THREE DEPARTURE (RNAV) Departure Routes

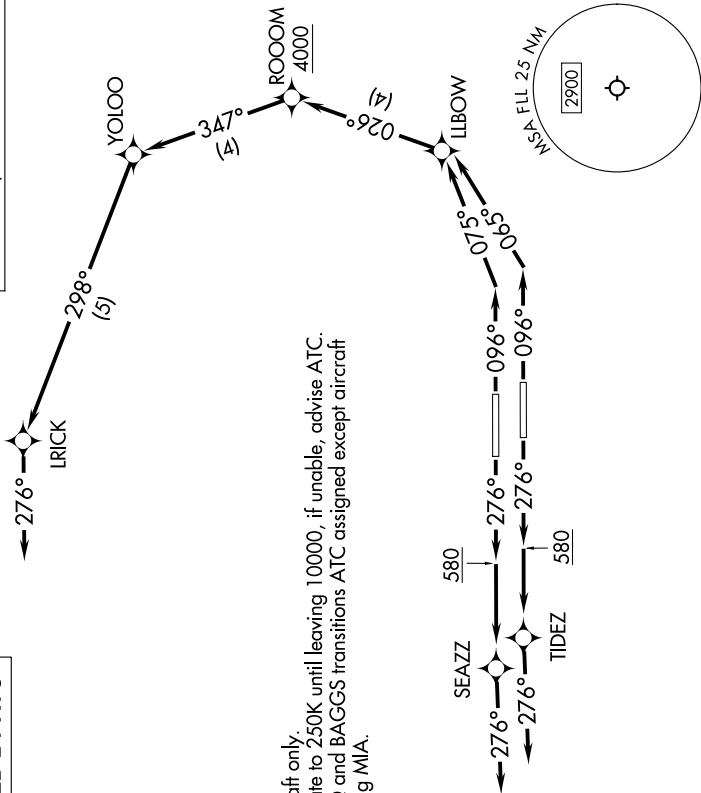
FORT LAUDERDALE, FLORIDA

SE-3, 03 OCT 2024 to 31 OCT 2024

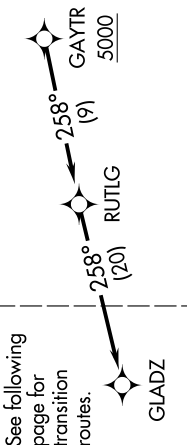
TOP ALTITUDE: ASSIGNED BY ATC

MIAMI DEP CON
119.45 290.325 (Departing West)
126.05 251.1 (Departing East)
D-ATIS
135.0
CINC DEL
128.4
CPDLC
GND CON
121.4
FORT LAUDERDALE TOWER
119.3 257.8

RNAV-1 DME/DME/IRU or GPS.
RADAR required.



NOTE: Jet aircraft only.
NOTE: Accelerate to 250K until leaving 10000, if unable, advise ATC.
NOTE: SHAGG and BAGGS transitions ATC assigned except aircraft departing MIA.



See following page for transition routes.

TAKEOFF MINIMUMS
Rwys 10L/R, 28L/R: Standard with minimum climb of 500'/NM to 580.

(CONTINUED ON FOLLOWING PAGE)

NOTE: Chart not to scale.

GLADZ THREE DEPARTURE (RNAV) Departure Routes

FORT LAUDERDALE, FLORIDA

(GLADZ3.GLADZ) 21MAR24

FORT LAUDERDALE/HOLLYWOOD INTL (FLL)

SE-3, 03 OCT 2024 to 31 OCT 2024