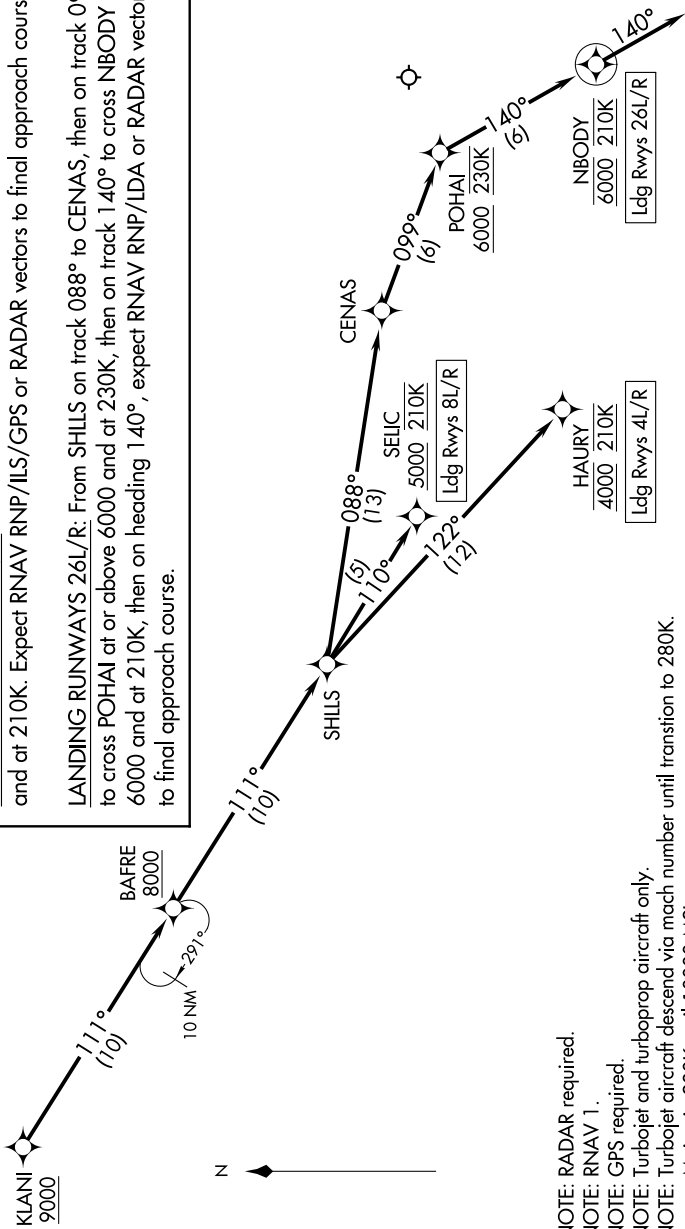


# KLANI THREE ARRIVAL (RNAV) Arrival Routes

PAC, 05 SEP 2024 to 31 OCT 2024

HCF CENTER  
119.9 306.9  
D-ATIS  
127.9 251.15  
HONOLULU TOWER  
118.1 257.8  
123.9 273.575 (Rwy 8R/26L)



## ARRIVAL ROUTE DESCRIPTION

From KLANI on track 111° to cross BAFRE at or above 8000, then on track 111° to SHILLS.

LANDING RUNWAYS 4L/R: From SHILLS on track 122° to cross HAURY at 4000 and at 210K, expect RNAV RNP/ILS/GPS or RADAR vectors to final approach course.

LANDING RUNWAYS 8L/R: From SHILLS on track 110° to cross SELIC at or above 5000 and at 210K. Expect RNAV RNP/ILS/GPS or RADAR vectors to final approach course.

LANDING RUNWAYS 26L/R: From SHILLS on track 088° to CENAS, then on track 099° to cross POHAL at or above 6000 and at 230K, then on track 140° to cross NBODY at 6000 and at 210K, then on heading 140°, expect RNAV RNP/LDA or RADAR vectors to final approach course.

- NOTE: RADAR required.
- NOTE: RNAV 1.
- NOTE: GPS required.
- NOTE: Turbojet and turboprop aircraft only.
- NOTE: Turbojet aircraft descend via mach number until transition to 280K. Maintain 280K until 10000 MSL.

NOTE: Chart not to scale.

PAC, 05 SEP 2024 to 31 OCT 2024