

OPIHI THREE DEPARTURE

AL-754 (FAA)

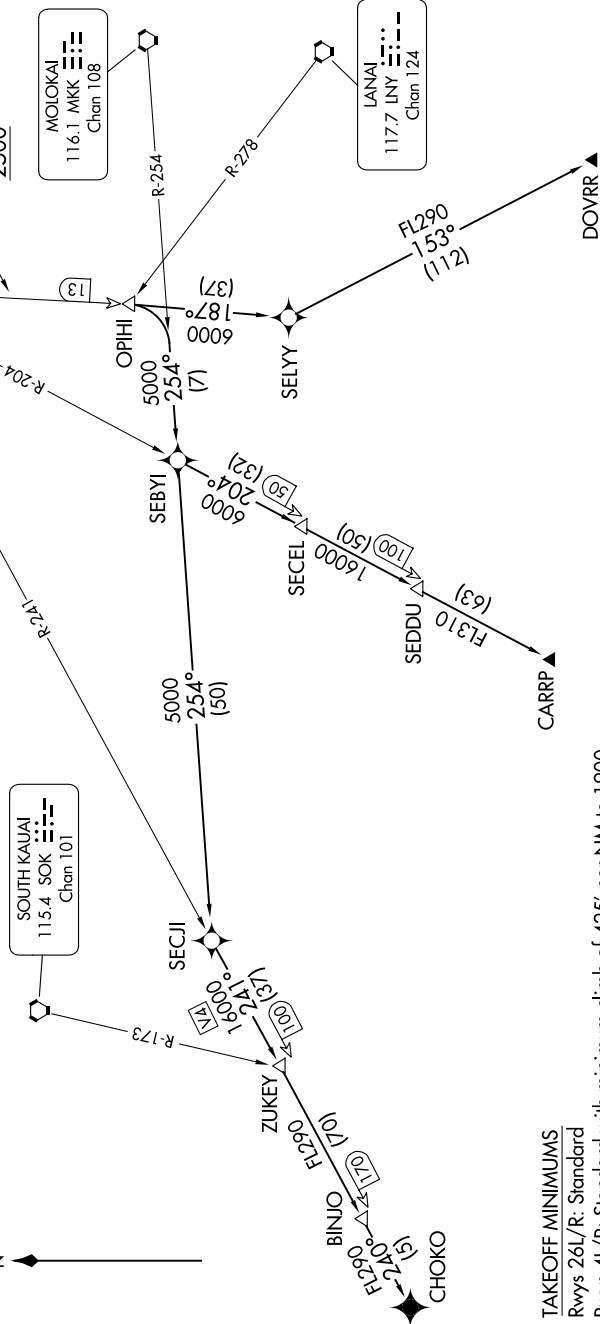
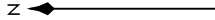
DANIEL K INOUYE INTL (HNL) (PHNL)
HONOLULU, HAWAII

PAC, 05 SEP 2024 to 31 OCT 2024

NOTE: Honolulu departures from Rwy 4L/R and 8L/R must complete right turn to assigned heading within 2 NM of departure end of runway. Cross CKH R-240 at or above 2500.

NOTE: Honolulu departures Rwy 26L/R left turn to assign heading must be completed within 2 NM of departure end of runway (HNL 3 DME).

- HCF APPROACH
 118.3 269.0
 D-ATIS
 127.9 251.15
 CLNC DEL
 121.4 281.4
 GND CON
 121.9 348.6
 HONOLULU TOWER
 118.1 257.8
 123.9 273.575 (Rwy 8R/26L)



- TAKEOFF MINIMUMS**
 Rwy 26L/R: Standard
 Rwy 4L/R: Standard with minimum climb of 425' per NM to 1900.
 Rwy 8L: Standard with minimum climb of 305' per NM to 1300.
 Rwy 8R: Standard with minimum climb of 296' per NM to 500.

NOTE: Chart not to scale.

(CONTINUED ON FOLLOWING PAGE)

PAC, 05 SEP 2024 to 31 OCT 2024

OPIHI THREE DEPARTURE

HONOLULU, HAWAII
DANIEL K INOUYE INTL (HNL) (PHNL)