

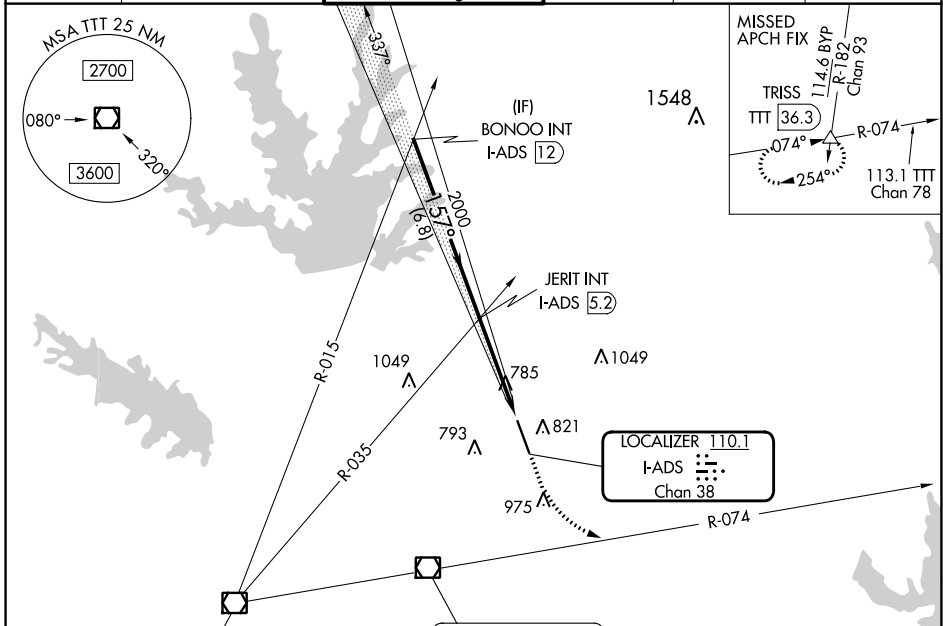
LOC/DME I-ADS 110.1 Chan 38	APP CRS 157°	Rwy Idg 6224 TDZE 644 Apt Elev 645
---	------------------------	---

ILS or LOC RWY 16

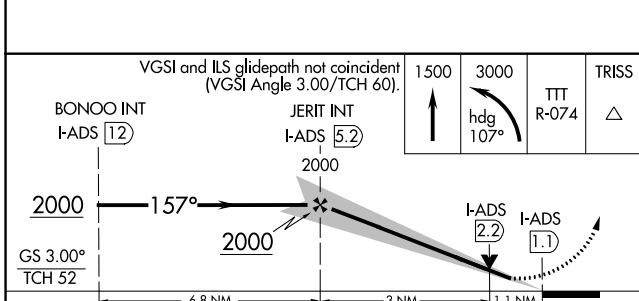
ADDISON (ADS)

RADAR required for procedure entry.		MALSR A5	MISSED APPROACH: Climb to 1500 then climbing left turn to 3000 on heading 107° and TTT VOR/DME R-074 to TRISS INT/TTT 36.3 DME and hold.
<p>▼ Rwy 16 helicopter visibility reduction below 1 SM NA. Inop table does not apply to S-ILS-16 all Cats, S-LOC-16 Cats A, B and C. For inop ALS, increase S-LOC-16 Cat D visibility to 1¼.</p>			

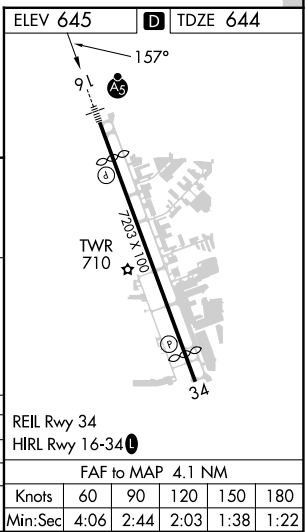
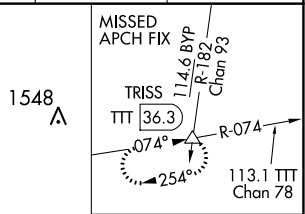
ATIS 133.4	REGIONAL APP CON 124.3 282.275	ADDISON TOWER* 126.0 (CTAF) 0 239.0	GND CON 121.6	CLNC DEL 119.55	UNICOM 122.95
----------------------	--	---	-------------------------	---------------------------	-------------------------



MAVERICK 113.1 TTT = Chan 78	COWBOY 116.2 CVE Chan 109
------------------------------------	---------------------------------



BONOO INT I-ADS 12	JERIT INT I-ADS 5.2	TRISS		
2000	2000	TTT R-074 △		
GS 3.00° TCH 52	6.8 NM	3 NM		
CATEGORY	A	B	C	D
S-ILS 16		894-1	250 (300-1)	
S-LOC 16		1040-1	396 (400-1)	
C CIRCLING	1200-1	555 (600-1)	1280-1¾ 635 (700-1¾)	1400-2½ 755 (800-2½)



SC-2, 03 OCT 2024 to 31 OCT 2024

SC-2, 03 OCT 2024 to 31 OCT 2024