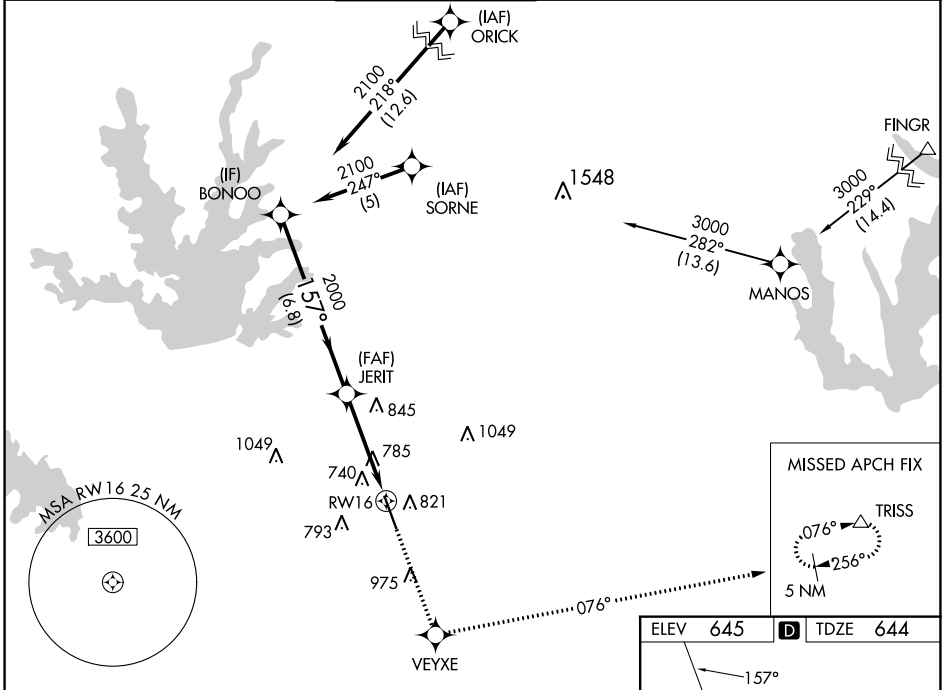


WAAS CH <b>82202</b> <b>W16A</b>	APP CRS <b>157°</b>	Rwy ldg <b>6224</b> TDZE <b>644</b> Apt Elev <b>645</b>
--	------------------------	---

# RNAV (GPS) RWY 16

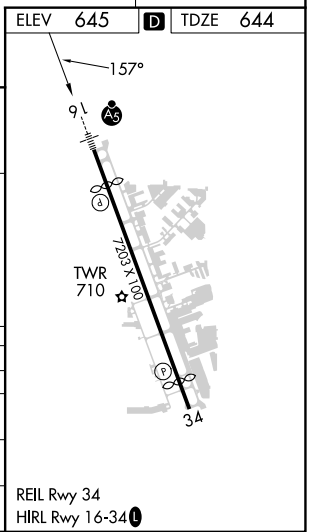
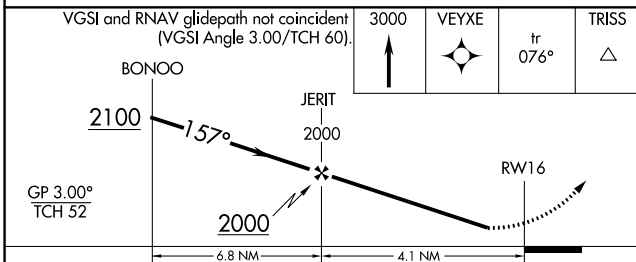
ADDISON (ADS)

RNP APCH-GPS.		MALSR	MISSED APPROACH: Climb to 3000 direct VEYXE and on track 076° to TRISS and hold.		
<p>▼ Rwy 16 helicopter visibility reduction below 1 SM NA. For uncompensated Baro-VNAV systems, LNAV/VNAV NA below -1.6°C or above 54°C. For inop ALS, increase LNAV Cat C visibility to 1¼ SM. Inop table does not apply to LPV all Cats, and LNAV Cats A/B.</p>					
ATIS <b>133.4</b>	REGIONAL APP CON <b>124.3 282.275</b>	ADDISON TOWER ★ <b>126.0 (CTAF) 0 239.0</b>	GND CON <b>121.6</b>	CLNC DEL <b>119.55</b>	UNICOM <b>122.95</b>



SC-2, 03 OCT 2024 to 31 OCT 2024

SC-2, 03 OCT 2024 to 31 OCT 2024



CATEGORY	A	B	C	D
LPV DA	944-1		300 (300-1)	
LNAV/VNAV DA	1077-1		433 (500-1)	
LNAV MDA	1100-1		456 (500-1)	
CIRCLING	1200-1 555 (600-1)		1280-1¼ 635 (700-1¾)	1400-2½ 755 (800-2½)