

TEXOMA FIVE DEPARTURE

REGIONAL DEP CON
 124.3 282.275
 ATIS
 133.4
 CLNC DEL
 119.55
 GND CON
 121.6
 ADDISON TOWER ★
 126.0 (CTAF) 239.0

**TOP ALTITUDE:
 ASSIGNED BY ATC**

TULSA
 114.4 TUL
 Chan 91

RADAR and DME required.

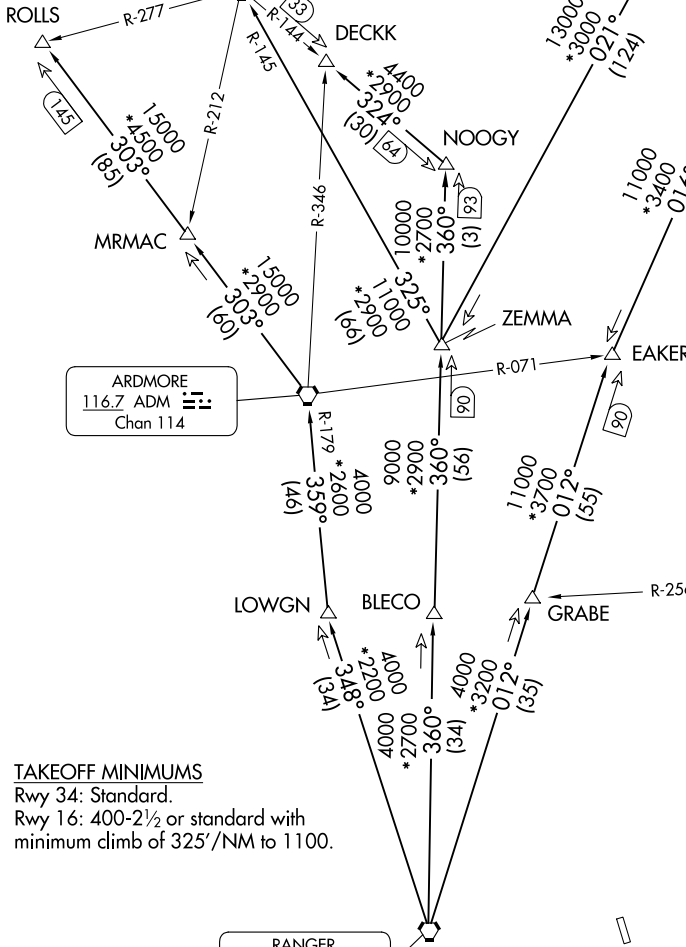
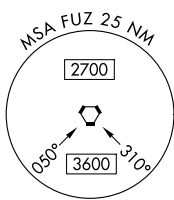
WILL ROGERS
 114.1 IRW
 Chan 88

OKMULGEE
 114.9 OKM
 Chan 96

ARDMORE
 116.7 ADM
 Chan 114

BONHAM
 114.6 BYP
 Chan 93

RANGER
 115.7 FUZ
 Chan 104



TAKEOFF MINIMUMS
 Rwy 34: Standard.
 Rwy 16: 400-2½ or standard with minimum climb of 325'/NM to 1100.

NOTE: Chart not to scale.

(CONTINUED ON FOLLOWING PAGE)

SC-2, 03 OCT 2024 to 31 OCT 2024

SC-2, 03 OCT 2024 to 31 OCT 2024

TEXOMA FIVE DEPARTURE