

TACAN RWY 30

VANDENBERG SFB (KVBG)

TACAN VBG Chan 59(Y)	APCH CRS 299°	Rwy Idg 15,000 TDZE 368 Arprt Elev 368
--------------------------------	-------------------------	---

[USSF]

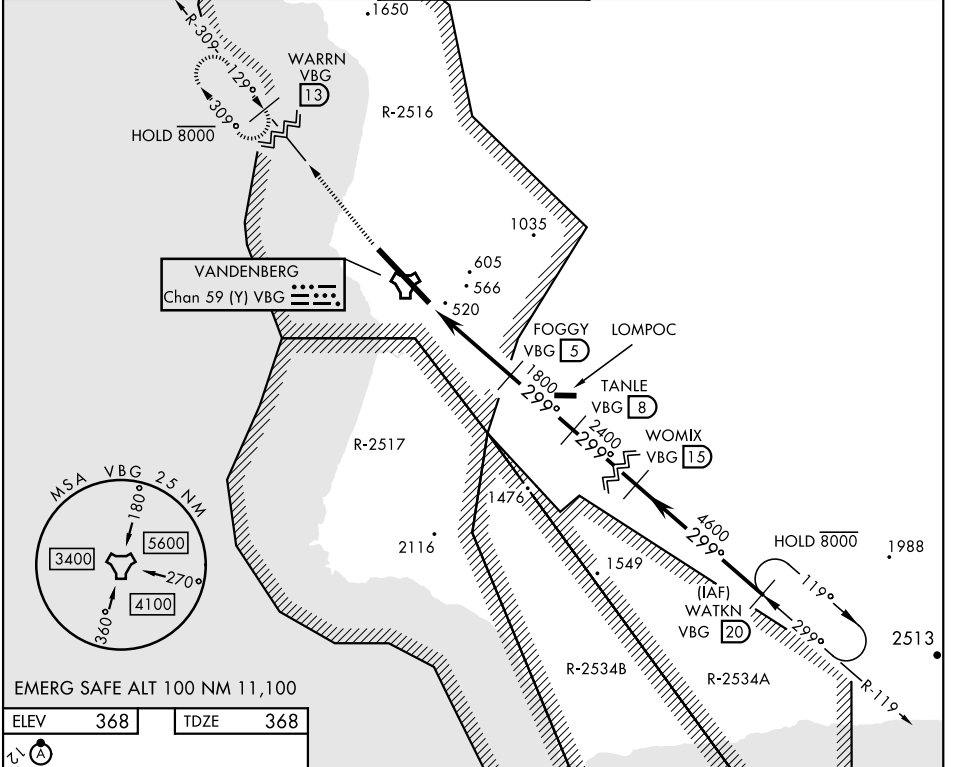
▼ * When ALS inop, increase CAT AB RVR to 55 and vis to 1 mile, CAT CDE vis to 1½ miles.

ALSF-2



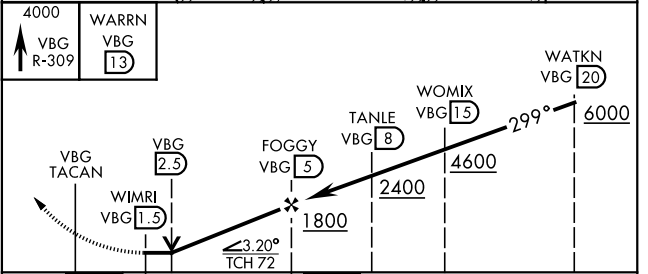
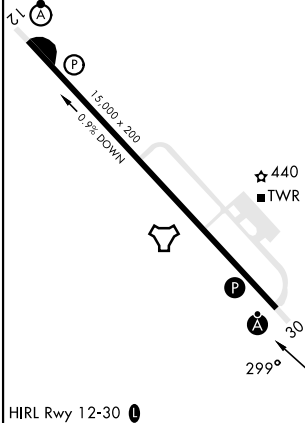
MISSED APPROACH: Climb out VBG TACAN R-309 to WARRN and hold. Continue climb in hold maintain 4000.

ATIS 133.125 257.975	SANTA BARBARA APP/DEP CON 124.15 327.8	TOWER★ (CTAF) 326.2	GND CON 121.75 275.8	CLNC DEL 121.75 275.8
--------------------------------	---	-------------------------------	--------------------------------	---------------------------------



EMERG SAFE ALT 100 NM 11,100

ELEV	368	TDZE	368
------	-----	------	-----



CATEGORY	A	B	C	D	E
S-30 *	920/24	552 (600-½)	920/60	552 (600-1½)	
C CIRCLING	980-1 612 (700-1)	1000-1 632 (700-1)	1020-1¾ 652(700-1¾)	1180-2¾ 812(900-2¾)	1560-3 1192(1200-3)

TACAN RWY 30

SW-3, 03 OCT 2024 to 31 OCT 2024

SW-3, 03 OCT 2024 to 31 OCT 2024