

MARYSVILLE, CALIFORNIA

# HI-ILS or LOC Z RWY 15

LOC I-BAB <b>109.5</b>	APCH CRS <b>145°</b>	Rwy Idg <b>12,001</b>
		TDZE <b>113</b>
		Arpt Elev <b>113</b>

- (USAF)

BEALE AFB (KBAB)

RADAR or DME required

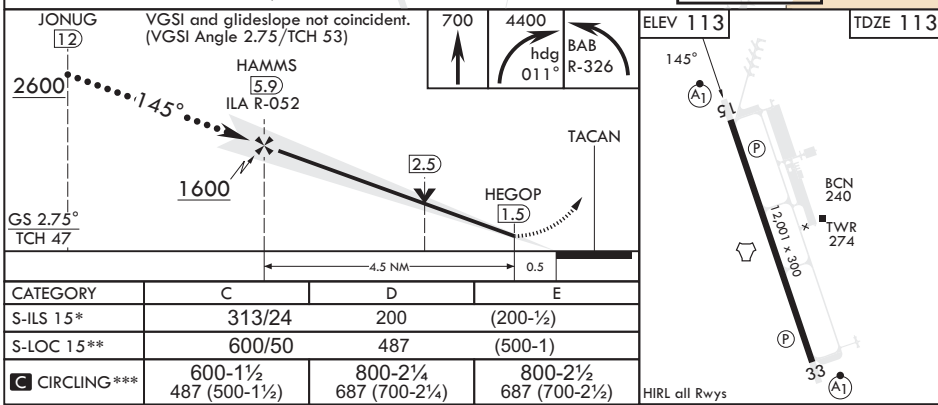
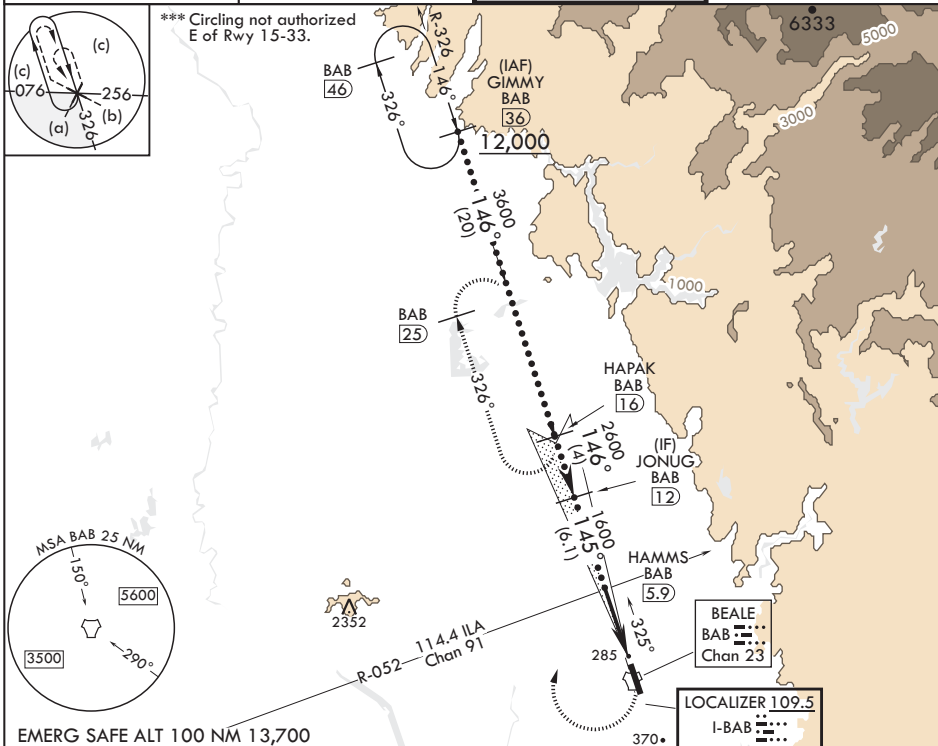
**V** \* When ALS inop, increase CAT CDE RVR to 40 and vis to 3/4 mile.  
\*\* When ALS inop, increase CAT CDE vis to 1 3/8 miles.

ALSF-1



MISSED APPROACH: Climb to to 700 on heading 145°, then climbing right turn to 4400 heading 011° to intercept BAB R-326 to HAPAK and hold, continue climb in hold to 4400.

ATIS* <b>124.55 273.5</b>	NORCAL APP CON <b>125.4 259.1</b>	TOWER* <b>119.4 284.75</b>	GND CON <b>121.6 257.75</b>
------------------------------	--------------------------------------	-------------------------------	--------------------------------



MARYSVILLE, CALIFORNIA

39°08'N - 121°26'W

BEALE AFB (KBAB)

Amdt 6 25JAN24

# HI-ILS or LOC Z RWY 15

SW-2, 03 OCT 2024 to 31 OCT 2024

SW-2, 03 OCT 2024 to 31 OCT 2024