

MARYSVILLE, CALIFORNIA

# TACAN Y RWY 15

TACAN BAB Chan 23	APCH CRS 153°	Rwy ldg TDZE Arprt Elev	12,001 113 113
----------------------	------------------	-------------------------------	----------------------

- (USAF)

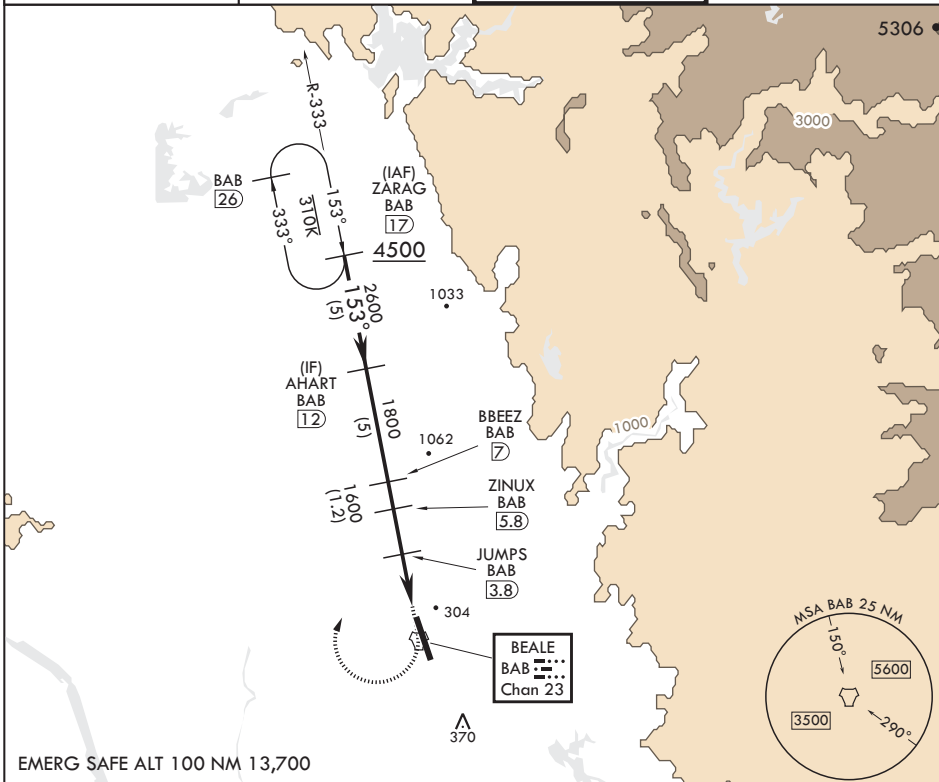
BEALE AFB (KBAB)

**ALSF-1** MISSED APPROACH: Climb to 700 on heading 153°, then climbing right turn to 4700 heading 018° to intercept BAB R-333 to ZARAG and hold, continue climb-in-hold to 4700.

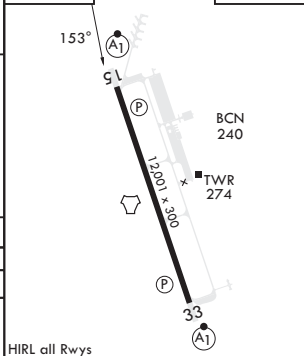
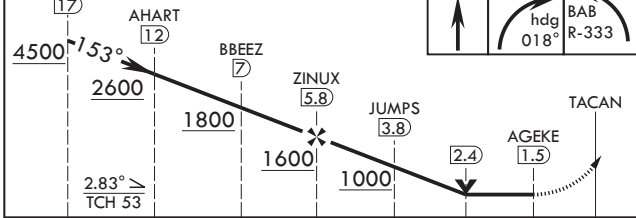
**ALSF-1**

\* When ALS inop, increase CAT AB RVR to 55 and vis to 1 mile, CAT CDE vis to 1 3/8 miles.  
 \*\* Circling not authorized E of Rwy 15-33.

ATIS* 124.55 273.5	NORCAL APP CON 125.4 259.1	TOWER* 119.4 284.75	GND CON 121.6 257.75
-----------------------	-------------------------------	------------------------	-------------------------



ZARAG 17	700	4700	BAB R-333	ELEV 113	TDZE 113
----------	-----	------	-----------	----------	----------



CATEGORY	A	B	C	D	E
S-15*	560/24 447 (500-½)	560/45 447 (500-¾)	560/45 447 (500-¾)	560/45 447 (500-¾)	560/45 447 (500-¾)
<b>C</b> CIRCLING**	600-1 487 (500-1)	600-1½ 487 (500-1½)	800-2¼ 687 (700-2¼)	800-2¼ 687 (700-2¼)	800-2½ 687 (700-2½)

HIRL all Rwys

MARYSVILLE, CALIFORNIA  
Amdt 6 22FEB24

39°08'N - 121°26'W

BEALE AFB (KBAB)

# TACAN Y RWY 15

SW-2, 03 OCT 2024 to 31 OCT 2024

SW-2, 03 OCT 2024 to 31 OCT 2024