


LOC/DME I-LIH <b>110.9</b> Chan 46	APP CRS <b>349°</b>	Rwy Idg TDZE Apt Elev	<b>6500</b> <b>96</b> <b>152</b>
--	------------------------	-----------------------------	--

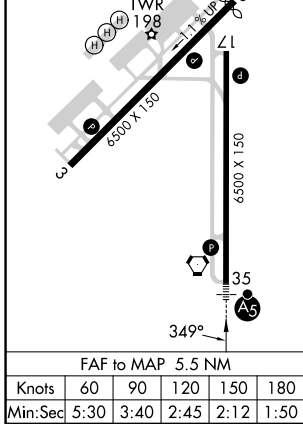
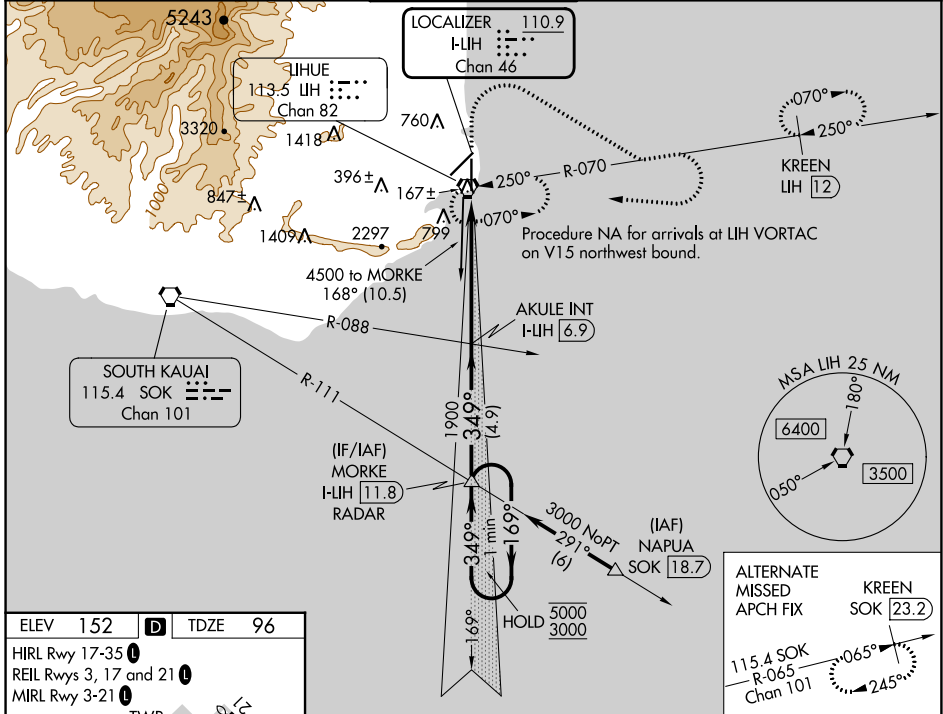
# ILS or LOC RWY 35

LIHUE (LIH)(PHLI)

**⚠** Circling NA at night. Circling NA west of Rwy 17-35. For inop ALS, increase S-ILS 35 Cat E visibility to ¾ SM and increase S-LOC 35 Cat E visibility to 1 SM.

**MALSRS**  MISSED APPROACH: Climb to 600 then climbing right turn to 3000 on heading 110° and LIH VORTAC R-070 then climbing right turn to 4000 direct LIH VORTAC and hold. (TACAN or DME equipped aircraft continue on LIH VORTAC R-070 to KREEN/LIH VORTAC 12 DME and hold, east, RT, 250° inbound, continue climb-in-hold to 3000).

ATIS <b>127.2</b>	HCF CENTER <b>126.5 269.4</b>	<b>LIHUE TOWER*</b> <b>118.9</b> (CTAF) <b>263.1</b>	GND CON <b>121.9</b>	CLNC DEL <b>126.5 269.4</b> (When twr closed)
----------------------	----------------------------------	---	-------------------------	---



One Minute Holding Pattern 5000 ← 169° 3000 → 349° GS 3.00° TCH 55	MORKE I-LIH 11.8 RADAR AKULE INT I-LIH 6.9 LIH R-070 Use I-LIH DME when on the localizer course.	600	3000	4000	LIH	
		↑	hdg 110°	LIH R-070		
CATEGORY      A      B      C      D      E		S-ILS 35      296-½      200 (200-½)		S-LOC 35      420-½      324 (300-½)		
<b>CIRCLING</b>		520-1 368 (400-1)	620-1 468 (500-1)	620-1½ 468 (500-1½)	720-2 568 (600-2)	740-2 588 (600-2)