

APP CRS <b>349°</b>	Rwy Idg <b>6500</b>
	TDZE <b>96</b>
	Apt Elev <b>153</b>

# RNAV (RNP) Z RWY 35

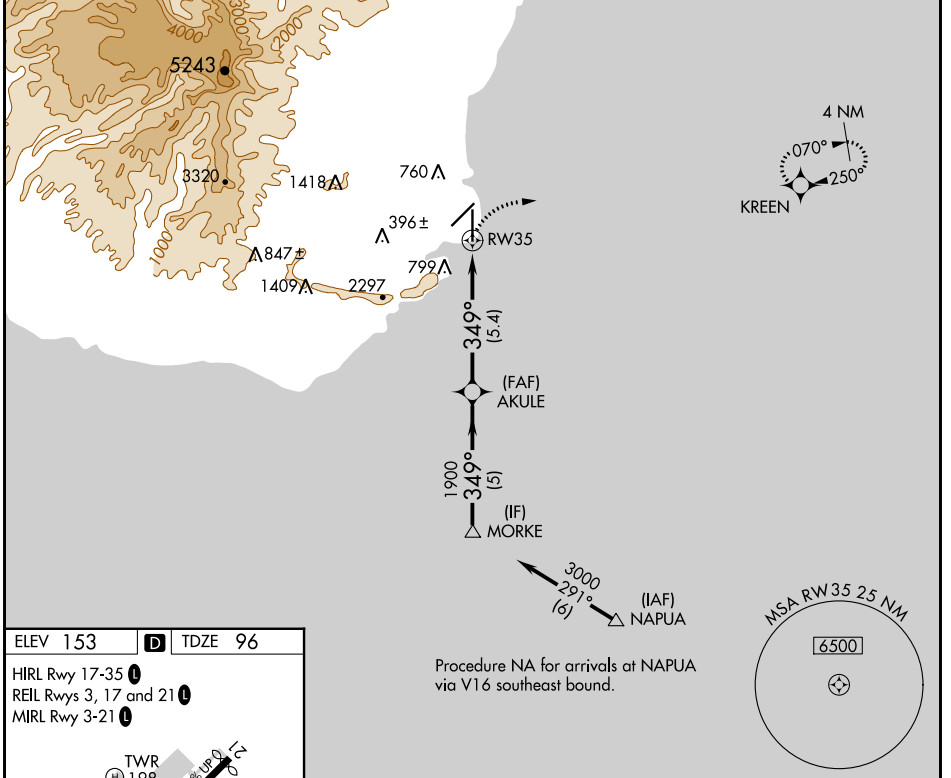
LIHUE (LIH)(PHLI)

**V** GPS required. For inoperative MALSR, increase RNP 0.30 visibility to 1¾. For uncompensated Baro-VNAV systems, procedure NA below 14°C (57°F) or above 48°C (119°F).

**MALSR**  

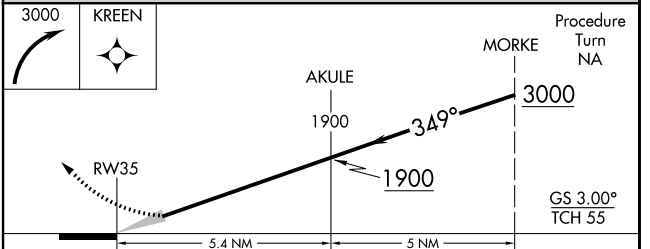
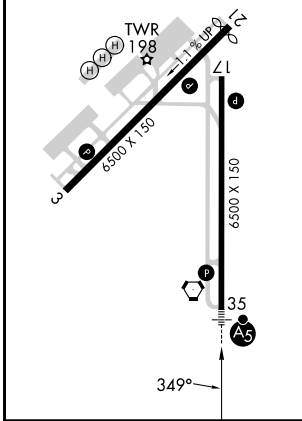

**MISSED APPROACH:** Climbing right turn to 3000 direct KREEN and hold.

ATIS <b>127.2</b>	HCF CENTER <b>126.5 269.4</b>	LIHUE TOWER* <b>118.9</b> (CTAF) <b>263.1</b>	GND CON <b>121.9</b>	CLNC DEL <b>126.5 269.4</b> (When twr closed)
----------------------	----------------------------------	--	-------------------------	---



ELEV 153	<b>D</b>	TDZE 96
----------	----------	---------

HIRL Rwy 17-35 **I**  
 REIL Rwys 3, 17 and 21 **I**  
 MIRL Rwy 3-21 **I**



CATEGORY	A	B	C	D
RNP 0.30 DA	599-1¼ 503 (500-1¼)			

**AUTHORIZATION REQUIRED**

PAC, 05 SEP 2024 to 31 OCT 2024

PAC, 05 SEP 2024 to 31 OCT 2024