

(SNGRA2.SNGRA) 17285

SNGRA TWO DEPARTURE (RNAV)

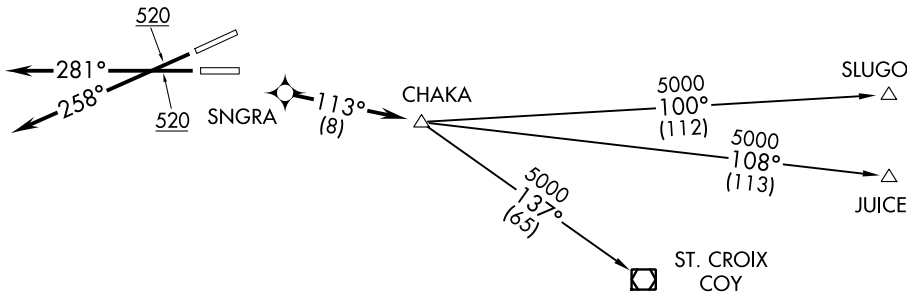
LUIS MUNOZ MARIN INTL (SJU)(TJSJ)

AL-784 (FAA)

SAN JUAN, PUERTO RICO

D-ATIS 125.8
 CLNC DEL
 126.4 284.6
 CPDLC
 SAN JUAN TOWER
 132.05 257.8
 GND CON
 121.9 348.6
 SAN JUAN DEP CON
 119.4 269.2 (West & SW)
 120.9 290.2 (North & East)

TOP ALTITUDE:
5000



TAKE-OFF MINIMUMS

Rwy 8, 10: NA-ATC.

Rwy 26: Standard with minimum obstacle climb of 311' per NM to 4800.
ATC climb of 350' per NM to 5000.

Rwy 28: Standard with minimum obstacle climb of 323' per NM to 4800.
ATC climb of 350' per NM to 5000.

NOTE: GPS required.

NOTE: For Prop and Turboprop aircraft only.

NOTE: RNAV 1.

NOTE: RADAR required.

NOTE: Chart not to scale.



DEPARTURE ROUTE DESCRIPTION

TAKEOFF RUNWAY 26: Climb heading 258° to 520, continue climb expect vectors to SNGRA, then via 113° track to CHAKA. Thence. . . .

TAKEOFF RUNWAY 28: Climb heading 281° to 520, continue climb expect vectors to SNGRA, then via 113° track to CHAKA. Thence. . . .

. . . . via assigned transition. Maintain 5000 unless assigned lower altitude. Expect clearance to FL280, or requested altitude if lower, ten minutes after departure.

JUICE TRANSITION (SNGRA2.JUICE)

SLUGO TRANSITION (SNGRA2.SLUGO)

ST. CROIX TRANSITION (SNGRA2.COY)

SNGRA TWO DEPARTURE (RNAV)

(SNGRA2.SNGRA) 10DEC15

SAN JUAN, PUERTO RICO

LUIS MUNOZ MARIN INTL (SJU)(TJSJ)

SE-3, 03 OCT 2024 to 31 OCT 2024

SE-3, 03 OCT 2024 to 31 OCT 2024