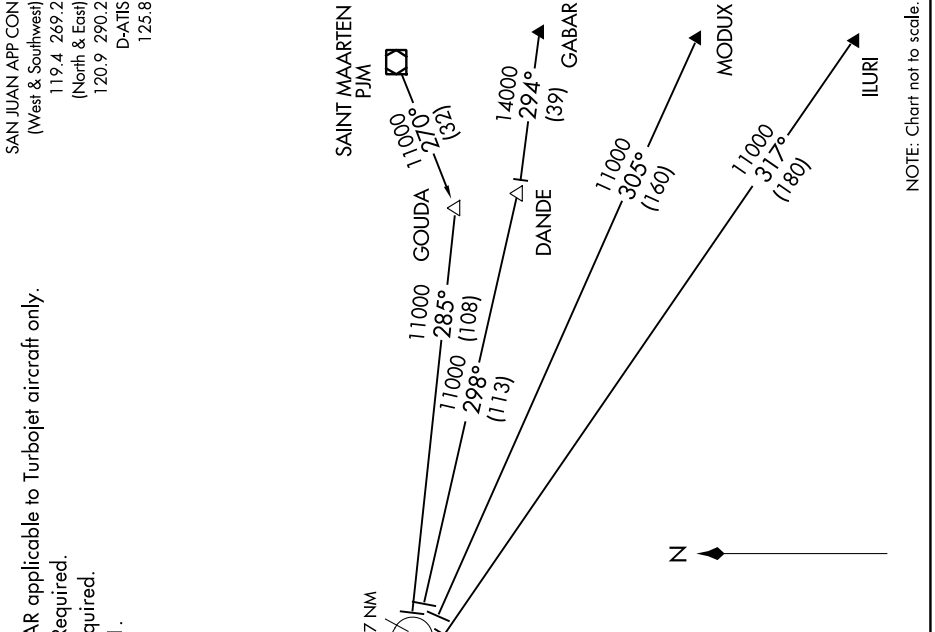


# TROCO THREE ARRIVAL (RNAV)

SAN JUAN APP CON  
(West & Southwest)  
119.4 269.2  
(North & East)  
120.9 290.2  
D-ATIS  
125.8

NOTE: This STAR applicable to Turbojet aircraft only.  
NOTE: Radar Required.  
NOTE: GPS Required.  
NOTE: RNAV 1.

SE-3, 03 OCT 2024 to 31 OCT 2024



NOTE: Chart not to scale.

### ARRIVAL ROUTE DESCRIPTION

**GABAR TRANSITION [GABAR.TROCO3]:**  
**ILURI TRANSITION [ILURI.TROCO3]:**  
**MODUX TRANSITION [MODUX.TROCO3]**  
**ST MAARTEN TRANSITION [PJM.TROCO3]:**

From over MAVIE on track 315° to TROCO, thence via assigned runway transition.  
 Landing East Rwy 08: From over TROCO on track 322° to REKUA, then on track 260° to PLENA, then on track 347° to WESEN.  
 Landing East Rwy 10: From over TROCO on track 322° to REKUA, then on track 281° to GARCY, then on track 011° to TINNER.  
 Landing West Rwy 26/28: From over TROCO on track 317° to YUNKE, then heading 023°. Expect radar vectors.

SE-3, 03 OCT 2024 to 31 OCT 2024