

WAAS CH 49005 W12A	APP CRS 119°	Rwy Idg TDZE 547 Apt Elev 549
--	------------------------	---

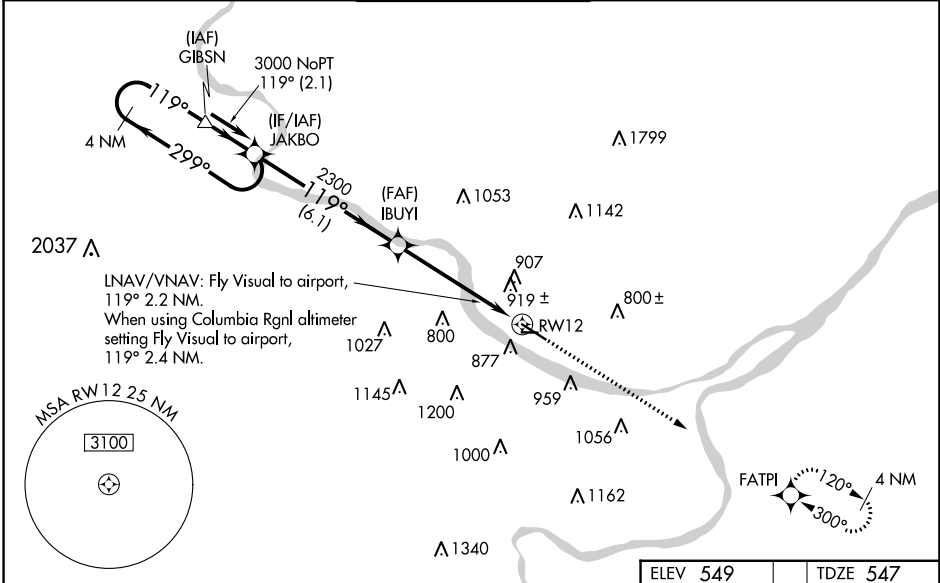
RNAV (GPS) RWY 12

JEFFERSON CITY MEML (JEF)

⚠ For uncompensated Baro-VNAV systems, LNAV/VNAV NA below -1.6°C (4°F) or above 48°C (118°F). DME/DME RNP-0.3 NA. Helicopter visibility reduction below 3/4 SM NA. When local altimeter setting not received, use Columbia Rgnl altimeter setting and increase all DA/MDA 80 feet; and increase LPV all Cats visibility 1/4 SM, LNAV/VNAV Cats C and D visibility 1/2 SM, LNAV Cats B, C and D visibility 1/4 SM and Circling Cats A, B and C visibility 1/4 SM. Baro-VNAV and VDP NA when using Columbia Rgnl altimeter setting. Circling Rwy 9 NA at night.

MISSED APPROACH: Climb to 2800 direct FATPI and hold.

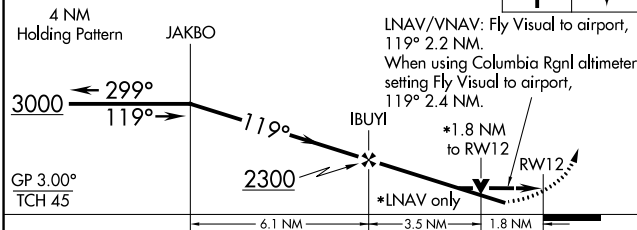
ASOS 133.625	MIZZU APP CON 124.375 353.925	JEFFERSON CITY TOWER * 125.6 (CTAF) 0	GND CON 121.7	UNICOM 122.95
------------------------	---	---	-------------------------	-------------------------



NC-3, 03 OCT 2024 to 31 OCT 2024

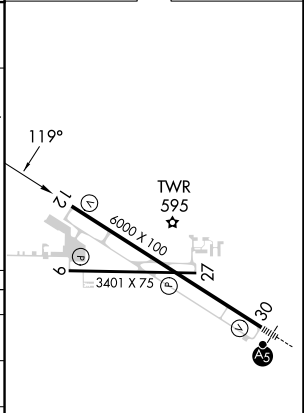
NC-3, 03 OCT 2024 to 31 OCT 2024

VGSI and RNAV glidepath not coincident (VGSI Angle 3.50/TCH 64).



ELEV 549	TDZE 547
----------	----------

CATEGORY	A	B	C	D
LPV DA	951-1 1/2 404 (500-1 1/2)			
LNAV/VNAV DA	1284-2 737 (800-2)		1284-2 1/4 737 (800-2 1/4)	
LNAV MDA	1260-1 713 (800-1)	1260-2 713 (800-2)		1260-2 1/4 713 (800-2 1/4)
CIRCLING	1320-1 771 (800-1)	1320-1 1/4 771 (800-1 1/4)	1320-2 1/4 771 (800-2 1/4)	1560-3 1011 (1100-3)



REIL Rwy 9, 12, and 27
MIRL Rwy 9-27
HIRL Rwy 12-30