

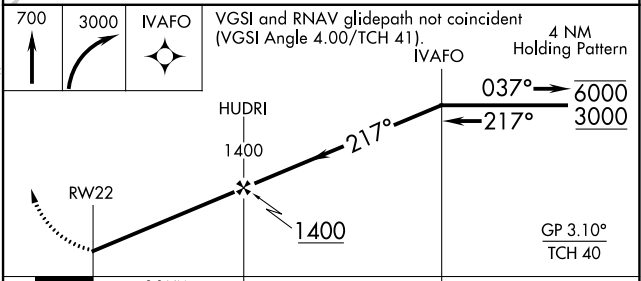
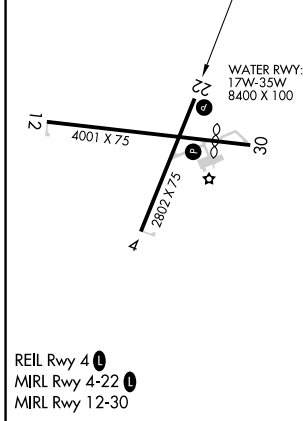
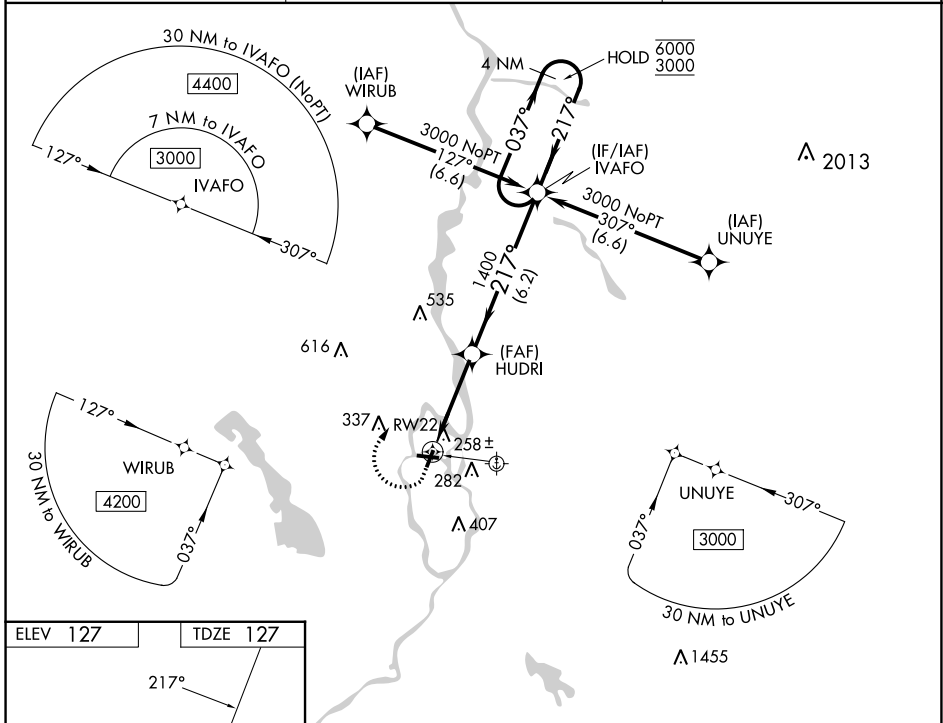
WAAS CH <b>61044</b> <b>W22A</b>	APP CRS <b>217°</b>	Rwy Idg TDZE <b>127</b> Apt Elev <b>127</b>	<b>2802</b>
--	------------------------	---	-------------

# RNAV (GPS) RWY 22

DEWITT FLD/OLD TOWN MUNI (OLD)

RNP APCH - GPS.	MISSED APPROACH: Climb to 700 then climbing right turn to 3000 direct IVAFO and hold, continue climb-in-hold to 3000.
<p>▼ Circling NA to Rwy 17W and 35W. Circling Rwy 4, 12, 22, 30 NA at night.</p> <p>▲ NA Rwy 22 helicopter visibility reduction below 3/4 SM NA. Use Bangor Inlt altimeter setting; when not received, use Bar Harbor altimeter setting and increase all MDA 60 feet and increase LPV visibility all Cats 1/8 SM.</p>	

BGR ASOS <b>127.75</b>	BANGOR APP CON <b>118.925 239.3</b>	UNICOM <b>122.8 (CTAF) 0</b>
---------------------------	--	---------------------------------



CATEGORY	A	B	C	D
LPV DA	467-1	340 (400-1)		NA
LNAV MDA	560-1	433 (500-1)		NA
<b>C</b> CIRCLING	640-1 513 (600-1)	700-1 573 (600-1)		NA

NE-1, 03 OCT 2024 to 31 OCT 2024

NE-1, 03 OCT 2024 to 31 OCT 2024