

APP CRS <b>338°</b>	Rwy Idg <b>4204</b>
	TDZE <b>286</b>
	Apt Elev <b>296</b>

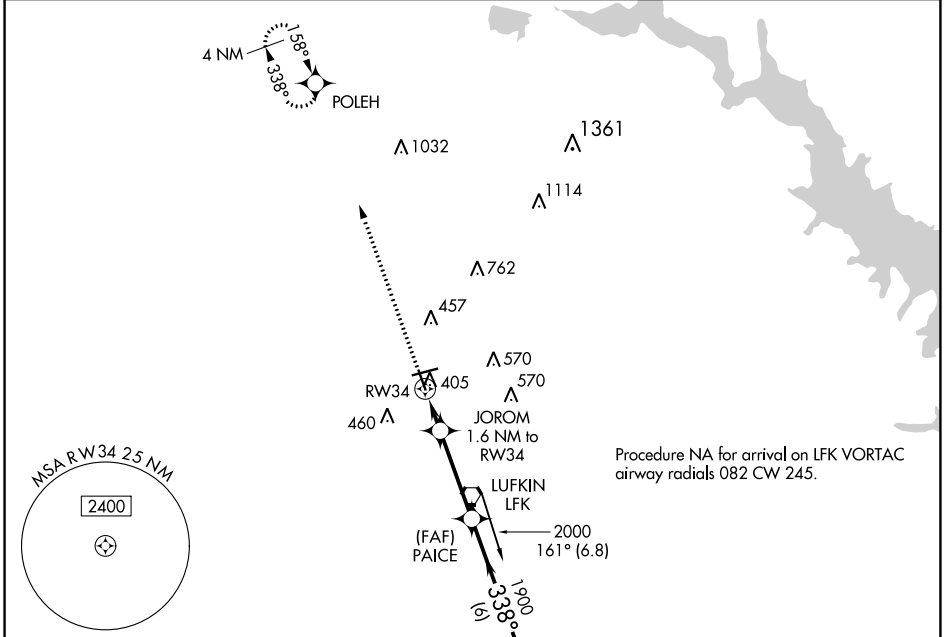
# RNAV (GPS) RWY 34

ANGELINA COUNTY (L<sup>FL</sup>K)

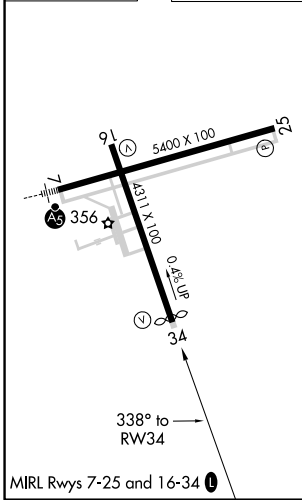
**▼** DME/DME RNP-0.3 NA. Circling Rwy 16, 25 NA at night.  
**▲** Rwy 34 helicopter visibility reduction below ¾ SM NA.

MISSED APPROACH: Climb to 2100 direct POLEH and hold.

ASOS <b>120.625</b>	HOUSTON CENTER <b>125.175 285.575</b>	UNICOM <b>123.0</b> (CTAF) <b>0</b>
------------------------	--	--



ELEV 296	TDZE 286
----------	----------



2100 POLEH	JOROM 1.6 NM to RW34	PAICE	EXISE	4 NM Holding Pattern
1900	1900	1900	2000	
840	1900	1900	2000	
1 NM to RW34	1 NM to RW34	3.3 NM	6 NM	
1 NM	0.6	3.3 NM	6 NM	
CATEGORY	A	B	C	D
LNAV MDA	660-1 374 (400-1)			
<b>C</b> CIRCLING	740-1 444 (500-1)	760-1 464 (500-1)	880-1½ 584 (600-1½)	1140-2¾ 844 (900-2¾)

SC-5, 03 OCT 2024 to 31 OCT 2024

SC-5, 03 OCT 2024 to 31 OCT 2024