

WAAS CH <b>90330</b> <b>W13A</b>	APP CRS <b>127°</b>	Rwy Idg <b>5200</b> TDZE <b>1196</b> Apt Elev <b>1201</b>
--	------------------------	---

# RNAV (GPS) RWY 13

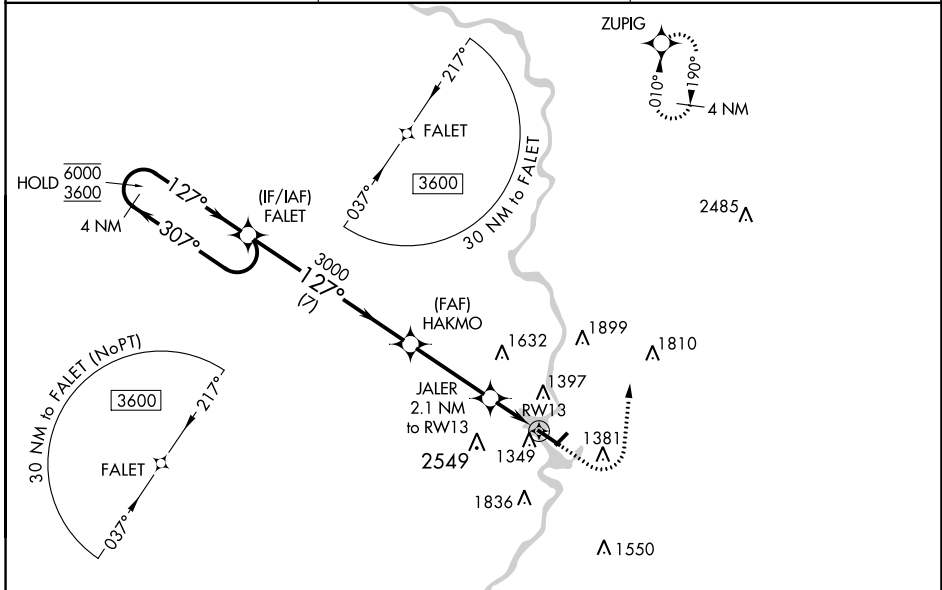
WAUSAU DOWNTOWN (A U W)

RNP APCH.

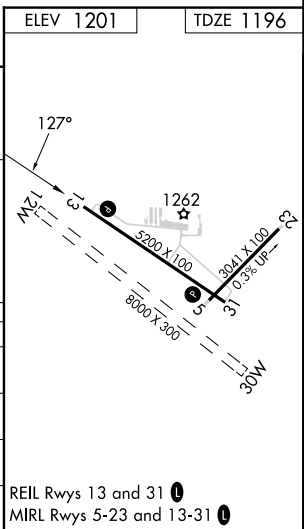
**▼** Circling NA to Rwsy 12W and 30W.  
**▲** Circling NA southwest of Rwy 13-31.  
 For uncompensated Baro-VNAV systems, LNAV/VNAV NA below -17°C or above 54°C.

MISSED APPROACH: Climb to 1800 then climbing left turn to 4000 direct ZUPIG and hold.

ASOS <b>125.925</b>	MINNEAPOLIS CENTER <b>124.4 317.7</b>	UNICOM <b>122.7 (CTAF) 0</b>
------------------------	--	---------------------------------



4 NM Holding Pattern		FALET	HAKMO	JALER	RWY 13	ZUPIG
6000 ← 307°		3600 → 127°	3000	2.1 NM to RWY 13	1.1 NM to RWY 13	1800
GP 3.00° TCH 43		3000	*1900	*LNAV only.		4000
		7 NM	3.4 NM	1 NM	1.1 NM	
CATEGORY	A	B	C	D		
LPV DA	1446-3/4		250 (300-3/4)			
LNAV/VNAV DA	1534-1 1/8		338 (400-1 1/8)			
LNAV MDA	1600-1	404 (400-1)	1600-1 1/8	404 (400-1 1/8)		
<b>C</b> CIRCLING	1840-1	639 (700-1)	1960-2 1/4	2260-3		
			759 (800-2 1/4)	1059 (1100-3)		



EC-3, 03 OCT 2024 to 31 OCT 2024

EC-3, 03 OCT 2024 to 31 OCT 2024