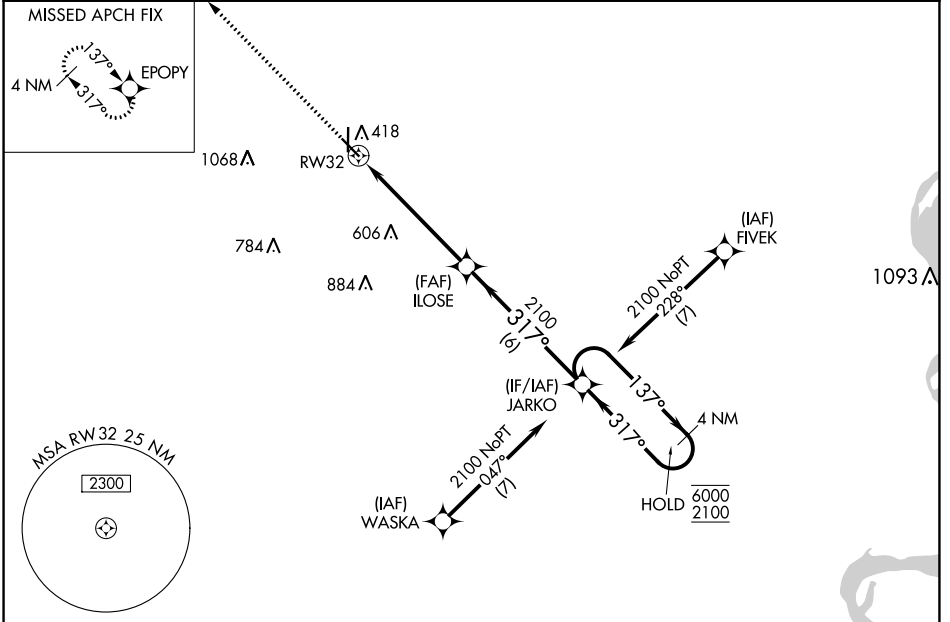


WAAS CH 40410 W32A	APP CRS 317°	Rwy Idg TDZE Apt Elev	5001 293 295
--	------------------------	-----------------------------	---

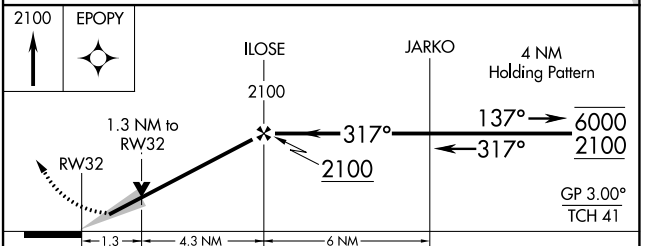
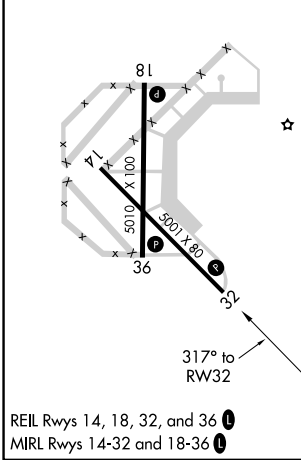
RNAV (GPS) RWY 32

MALDEN RGNL (M.A.W)

RNP APCH-GPS. ▼ For uncompensated Baro-VNAV systems, LNAV/VNAV NA below -15°C or above 54°C.		MISSED APPROACH: Climb to 2100 direct EPOPY and hold.	
AWOS-3PT 119.825	MEMPHIS CENTER 133.65 292.15	GCO 135.075	UNICOM 122.8 (CTAF) 0



ELEV 295	TDZE 293
----------	----------



CATEGORY	A	B	C	D
LPV DA	543-1 250 (300-1)			NA
LNAV/VNAV DA	543-1 250 (300-1)			NA
LNAV MDA	740-1	447 (500-1)	740-1 3/8 447 (500-1 3/8)	NA
CIRCLING	740-1 445 (500-1)	800-1 505 (600-1)	800-1 1/2 505 (600-1 1/2)	NA

NC-3, 03 OCT 2024 to 31 OCT 2024

NC-3, 03 OCT 2024 to 31 OCT 2024