


VOR/DME OTK <b>114.8</b> Chan <b>95</b>	APP CRS <b>338°</b>	Rwy Idg <b>8002</b> TDZE <b>200</b> Apt Elev <b>203</b>
-----------------------------------------------	------------------------	---------------------------------------------------------------

# VOR RWY 36

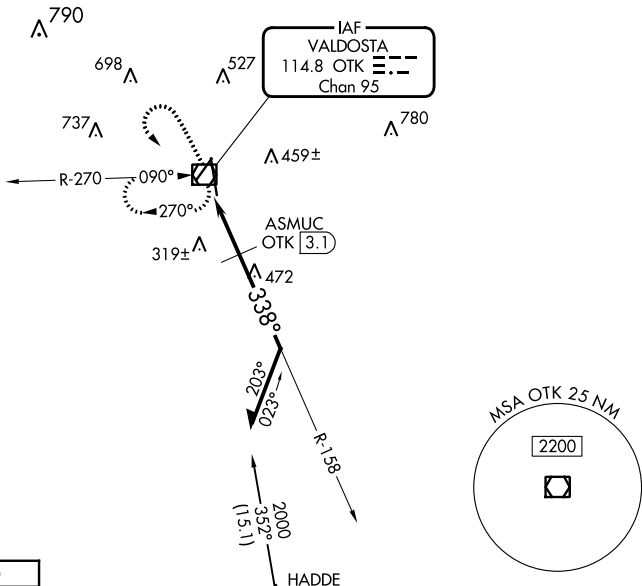
VALDOSTA RGNL (VLD)

**⚠** Rwy 36 helicopter visibility reduction below  $\frac{3}{4}$  SM NA. For inop ALS, increase S-36 Cats A/B visibility to 1 SM and Cats C/D to 1 $\frac{1}{2}$  SM; ASMUC FIX MINIMUMS: increase S-36 all Cats visibility to 1 SM.

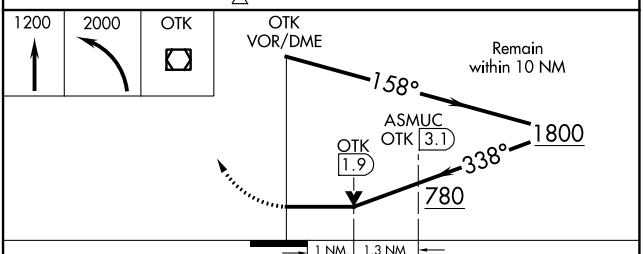
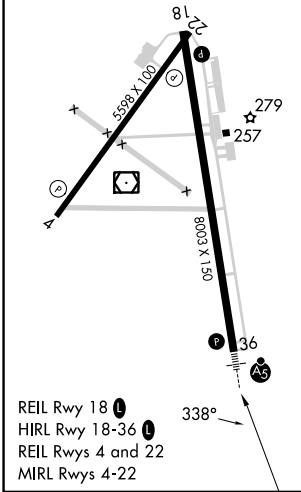
**MALSR** 

**MISSED APPROACH:** Climb to 1200 then climbing left turn to 2000 direct OTK VOR/DME and hold, continue climb-in-hold to 2000.

ASOS <b>126.225</b>	VALDOSTA APP CON * <b>126.6 285.6</b>	VALDOSTA TOWER * <b>128.35 (CTAF) 0</b>	GND CON <b>121.7</b>	UNICOM <b>122.95</b>
------------------------	------------------------------------------	--------------------------------------------	-------------------------	-------------------------



ELEV 203	<b>D</b>	TDZE 200
----------	----------	----------



CATEGORY	A	B	C	D
S-36	780- $\frac{3}{4}$	580 (600- $\frac{3}{4}$ )	780-1 $\frac{1}{4}$	580 (600-1 $\frac{1}{4}$ )
CIRCLING	780-1	577 (600-1)	900-2 697 (700-2)	1020-2 $\frac{3}{4}$ 817 (900-2 $\frac{3}{4}$ )
ASMUC FIX MINIMUMS				
S-36	580- $\frac{3}{4}$		380 (400- $\frac{3}{4}$ )	
CIRCLING	640-1 437 (500-1)	700-1 497 (500-1)	900-2 697 (700-2)	1020-2 $\frac{3}{4}$ 817 (900-2 $\frac{3}{4}$ )

SE-4, 03 OCT 2024 to 31 OCT 2024

SE-4, 03 OCT 2024 to 31 OCT 2024