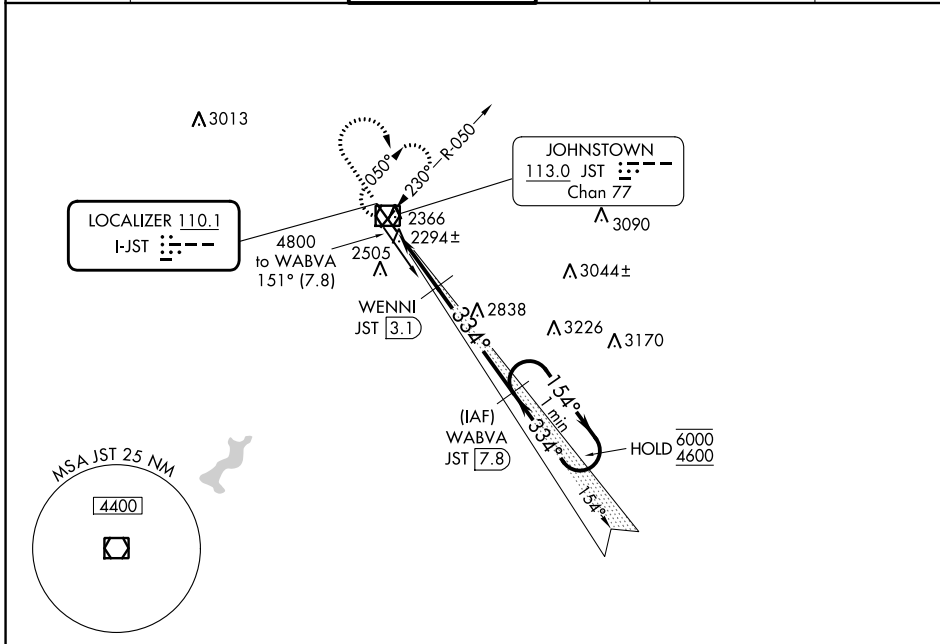


LOC I-JST 110.1	APP CRS 334°	Rwy Idg TDZE Apt Elev	6484 2281 2284
---------------------------	------------------------	-----------------------------	---

ILS or LOC RWY 33

JOHN MURTHA JOHNSTOWN/CAMBRIA COUNTY (JST)

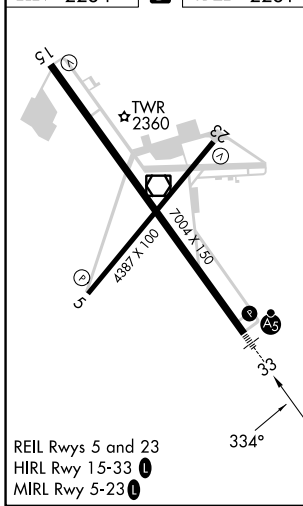
DME required. ▼ Glide slope unusable beyond 5 degrees left of course. ▲ For inop ALS, increase S-LOC 33 Cat C/D visibility to 7/8 SM.		MALSR	MISSED APPROACH: Climb to 3700 then climbing right turn to 4600 direct JST VOR/DME and hold, continue climb-in-hold to 4600.		
ATIS 118.325	JOHNSTOWN APP CON ★ 121.2 299.2	JOHNSTOWN TOWER ★ 125.75 (CTAF) ①	GND CON 121.6	CLNC DEL 126.85 235.775	UNICOM 122.95



NE-4, 03 OCT 2024 to 31 OCT 2024

NE-4, 03 OCT 2024 to 31 OCT 2024

ELEV 2284	D	TDZE 2281
-----------	----------	-----------



REIL Rws 5 and 23
HIRL Rwy 15-33 ①
MIRL Rwy 5-23 ①

③ 3700 ④ 4600 JST

↑ ↪ ⑤

One Minute Holding Pattern

WABVA JST 7.8

WENNI JST 3.1

JST 0.6, JST 1.5

3140, 3170, 3340, 334°, 154°, 6000, 4600

GS 3.00° TCH 58

CATEGORY	A	B	C	D
S-ILS 33	2481-1/2		200 (200-1/2)	
S-LOC 33	2600-1/2		319 (400-1/2)	
C CIRCLING	2700-1 416 (500-1)	2880-1 596 (600-1)	2880-1 1/2 596 (600-1 1/2)	3000-2 1/4 716 (800-2 1/4)