

(JENER4.JENER) 24025

AL-898 (FAA)

JOHN MURTHA JOHNSTOWN/CAMBRIA COUNTY (JST)

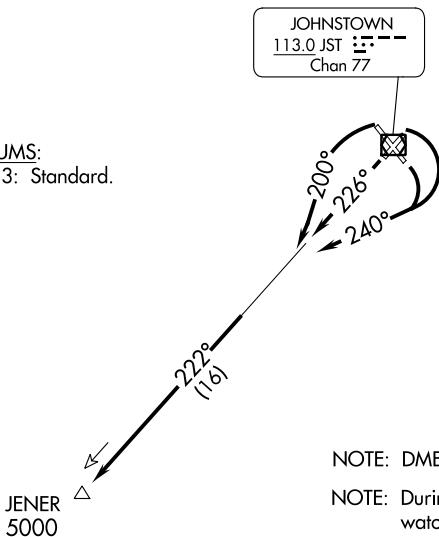
# JENER FOUR DEPARTURE

JOHNSTOWN, PENNSYLVANIA

ATIS 118.325  
CLNC DEL  
126.85 235.775  
GND CON  
121.6  
JOHNSTOWN TOWER ★  
125.75 (CTAF)  
JOHNSTOWN DEP CON ★  
121.2 299.2

**TOP ALTITUDE:  
ASSIGNED BY ATC**

TAKEOFF MINIMUMS:  
Rwys 5, 15, 23, 33: Standard.



NOTE: DME and radar required.

NOTE: During VFR conditions watch for opposing traffic on JST R-222.

NOTE: Chart not to scale.



## DEPARTURE ROUTE DESCRIPTION

TAKEOFF RUNWAYS 5 and 15: Turn right heading 240° to intercept JST R-222, Thence....

TAKEOFF RUNWAY 23: Climb heading 226° to intercept JST R-222, Thence....

TAKEOFF RUNWAY 33: Turn left heading 200° to intercept JST R-222, Thence....

....via JST R-222 to cross JENER/JST 16 DME at or above 5000. Thence via (assigned route).

# JENER FOUR DEPARTURE

JOHNSTOWN, PENNSYLVANIA

(JENER4.JENER) 21JUL16

JOHN MURTHA JOHNSTOWN/CAMBRIA COUNTY (JST)

NE-4, 03 OCT 2024 to 31 OCT 2024

NE-4, 03 OCT 2024 to 31 OCT 2024