

HI-TACAN Z RWY 5R

TACAN NTU Chan 113	APCH CRS 043°	Rwy Idg TDZE Arprt Elev 12,001 19 22
------------------------------	-------------------------	--

AL-934 [USN] OCEANA NAS (APOLLO SOUCEK FLD) (KNTU)

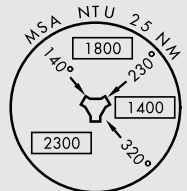
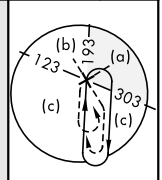
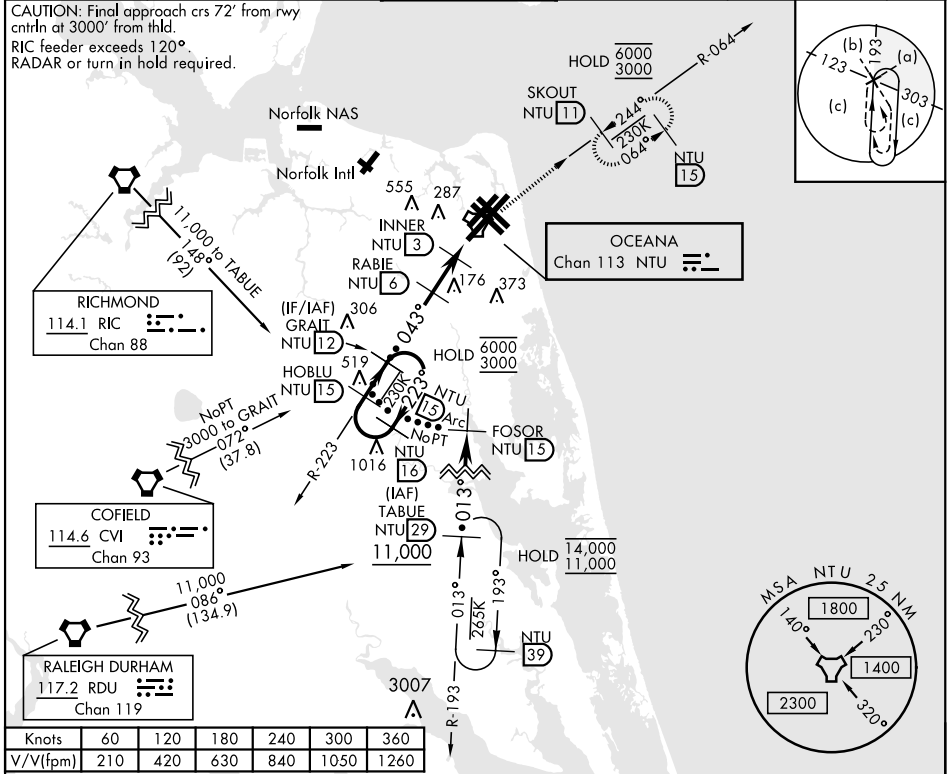
ALSIF-1

 MISSED APPROACH: Climb to 3000 via R-223 to NTU TACAN, and via R-064 to SKOUT and hold.

* When ALS inop, increase CAT CDE vis to 1½ miles.

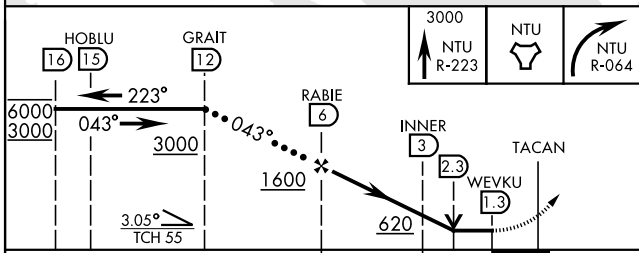
ATIS 317.6	APP/DEP CON 123.9 266.8	TOWER 127.075 360.2	GND CON 119.6 336.4	CLNC DEL 254.4	ASR/PAR
----------------------	-----------------------------------	-------------------------------	-------------------------------	--------------------------	---------

CAUTION: Final approach crs 72° from rwy cntrln at 3000' from thld.
 RIC feeder exceeds 120°. RADAR or turn in hold required.

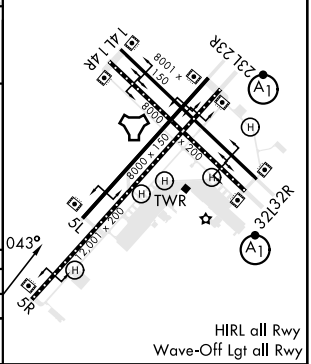


Knots	60	120	180	240	300	360
V/V(fpm)	210	420	630	840	1050	1260

Min climb of 210 H/NM to 3000 - Controlling Obstacle Unk
 EMERG SAFE ALT 100 NM 4100



ELEV	22	TDZE	19
------	----	------	----



CATEGORY	C	D	E
S-5R *	420-¾	401	(400-¾)
CIRCLING	600-1½ 578 (600-1½)	600-2 578 (600-2)	900-3 878 (900-3)

VIRGINIA BEACH, VIRGINIA 36°49'N-76°02'W OCEANA NAS (APOLLO SOUCEK FLD) (KNTU)

Orig 27JAN22

HI-TACAN Z RWY 5R

NE-3, 03 OCT 2024 to 31 OCT 2024

NE-3, 03 OCT 2024 to 31 OCT 2024

HIRL all Rwy
Wave-Off Lgt all Rwy