

VIRGINIA BEACH, VIRGINIA

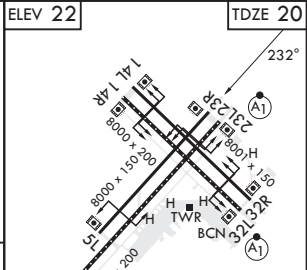
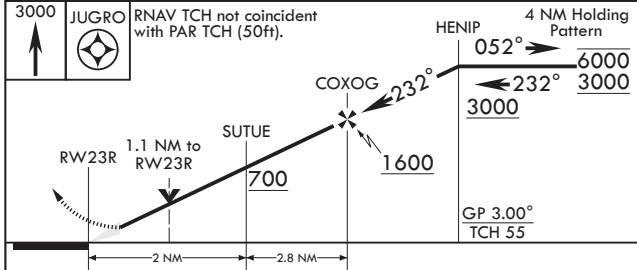
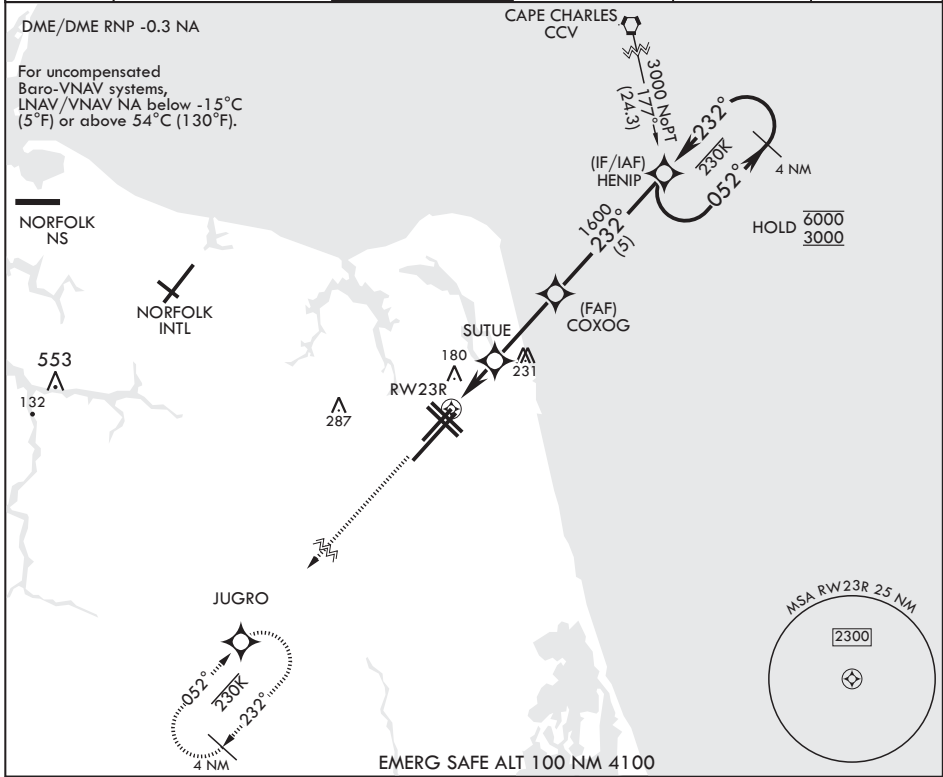
RNAV (GPS) RWY 23R

WAAS CH 71079 W23B	APCH CRS 232°	Rwy ldg TDZE 8000 20	Arpt Elev 22
--------------------------	------------------	----------------------------	-----------------

AL-934 (USN) OCEANA NAS (APOLLO SOUCEK FLD) (KNTU)

▽ MISSED APPROACH: Climb to 3000 direct JUGRO and hold.

ATIS 317.6	APP CON/DEP CON 123.9 266.8	TOWER 127.075 360.2	GND CON 119.6 336.4	CLNC DEL 254.4	ASR/PAR
---------------	--------------------------------	------------------------	------------------------	-------------------	---------



CATEGORY	A	B	C	D
LPV DA	220-3/4	200	(200-3/4)	
LNAV/VNAV DA	440-1 1/8	420	(500-1 1/8)	
LNAV MDA	440-1	420 (500-1)	440-1 1/8 420 (500-1 1/8)	
C CIRCLING	500-1	478 (500-1)	600-1 1/2 578 (600-1 1/2)	600-2 578 (600-2)

ELEV 22 TDZE 20
GP 3.00° TCH 55
HIRL all Rwys
Wave-Off Lights all Rwys

VIRGINIA BEACH, VIRGINIA
Amdt 4 27JAN22

36°49'N - 76°02'W OCEANA NAS (APOLLO SOUCEK FLD) (KNTU)

RNAV (GPS) RWY 23R

NE-3, 03 OCT 2024 to 31 OCT 2024

NE-3, 03 OCT 2024 to 31 OCT 2024