

VOR/DME	ATR	APP CRS	Rwy ldg	5331
112.6		234°	TDZE	51
Chan	73		Apt Elev	53

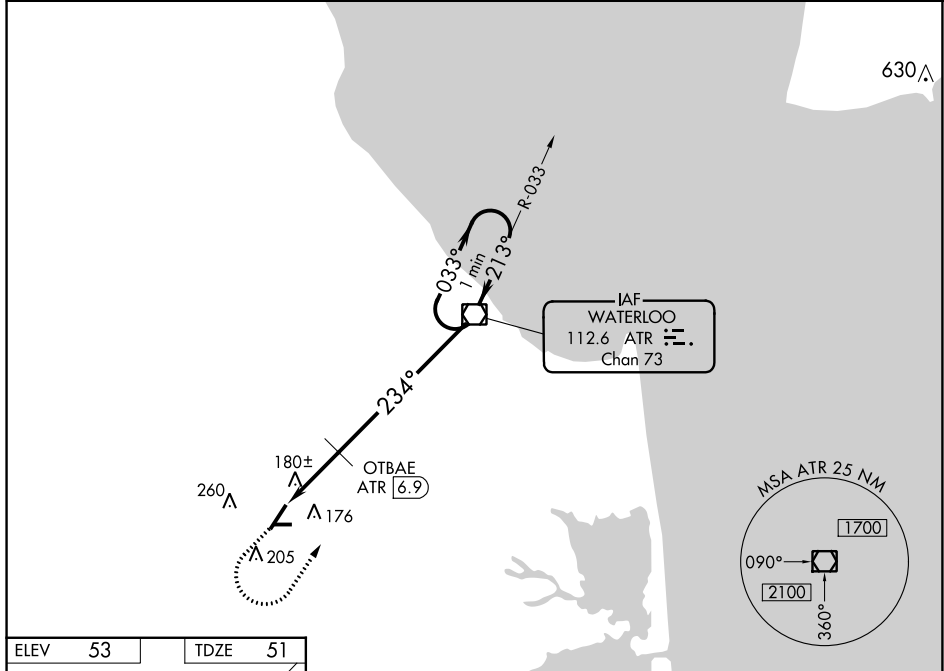
VOR RWY 22

DELAWARE COASTAL (GED)

▼ Rwy 22 helicopter visibility reduction below 1 SM NA.
▲ Rwy 22 Straight-In and Circling minimums NA at night.

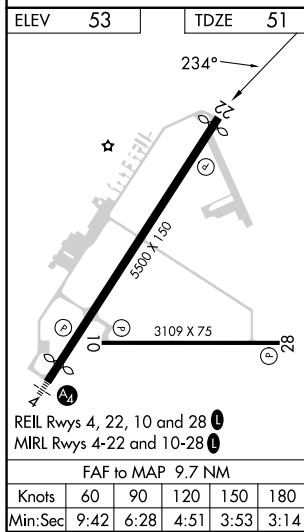
MISSED APPROACH: Climb to 800 then climbing left turn to 3000 direct ATR VOR/DME and hold.

ASOS	DOVER APP CON	GCO	UNICOM
118.375	132.425 257.875	125.55	123.0 (CTAF) 0



NE-3, 03 OCT 2024 to 31 OCT 2024

NE-3, 03 OCT 2024 to 31 OCT 2024



ELEV 53	TDZE 51	800	3000	ATR	VGSI and descent angles not coincident (VGSI Angle 3.00/TCH 45).	One Minute Holding Pattern
		ATR 9.7	OTBAE ATR 6.9	234°	2.83° TCH 52	3000
CATEGORY	A	B	C	D		
S-22	680-1	629 (700-1)	680-1¾	629 (700-1¾)		
C CIRCLING	680-1	627 (700-1)	720-1¾	667 (700-1¾)	720-2	667 (700-2)
OTBAE FIX MINIMUMS						
S-22	440-1	389 (400-1)	440-1½	389 (400-1½)		
C CIRCLING	560-1	507 (600-1)	580-1	527 (600-1)	720-1¾	667 (700-1¾)
					720-2	667 (700-2)