


LOC I-SBP <b>109.7</b>	APP CRS <b>110°</b>	Rwy ldg <b>5300</b> TDZE <b>198</b> Apt Elev <b>212</b>
---------------------------	------------------------	---

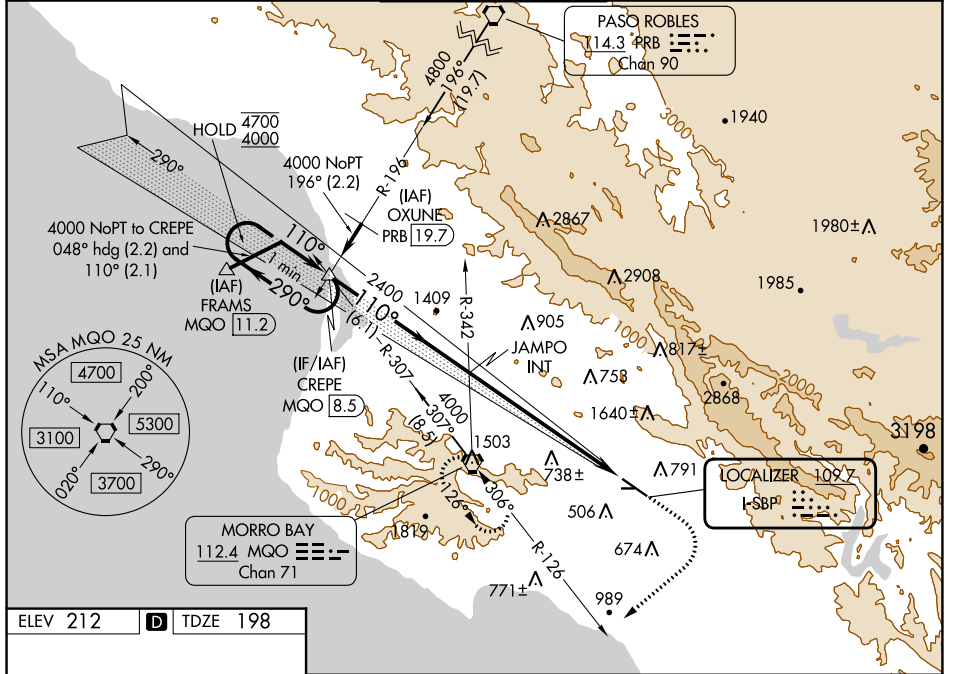
**ILS or LOC RWY 11**  
SAN LUIS OBISPO COUNTY RGNL (SBP)

**⚠** Circling Rwy 25 NA at night. Circling NA north of Rwy 11-29. Autopilot coupled approach NA below 677. For inop ALS, increase S-ILS 11 all Cats visibility to ¾ SM, S-LOC 11 Cat A visibility to 1¼ SM, Cat B visibility to 1½ SM.

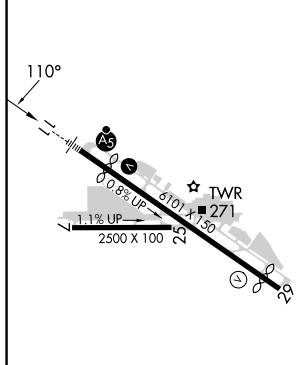
**MALS R** 


**MISSED APPROACH:** Climb to 1000 then climbing right turn to 3300 on heading 215° and MQO VORTAC R-126 to MQO VORTAC and hold, continue climb-in-hold to 3300. S-ILS 11\* missed approach requires minimum climb of 210 feet per NM to 1160.

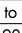
ATIS* <b>120.6</b>	SANTA BARBARA APP CON* <b>127.725 244.575</b>	SAN LUIS TOWER* <b>124.0 (CTAF) 0 379.9</b>	GND CON <b>121.6</b>	UNICOM <b>122.95</b>
-----------------------	--	--	-------------------------	-------------------------



ELEV 212	<b>D</b>	TDZE 198
----------	----------	----------

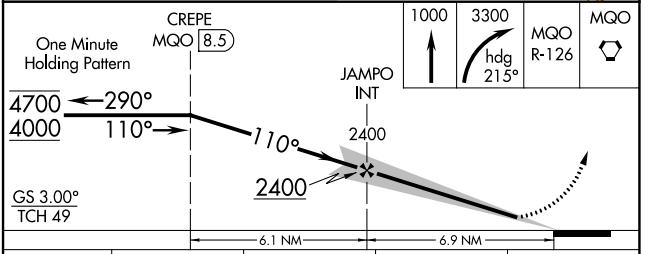


REIL Rwy 29 

HIRL Rwy 11-29 

FAF to MAP 6.9 NM

Knots	60	90	120	150	180
Min:Sec	6:54	4:36	3:27	2:46	2:18



CATEGORY	A	B	C	D
S-ILS 11*	398-½		200 (200-½)	
S-ILS 11	495-½		297 (300-½)	
S-LOC 11	1420-¾ 1222 (1300-¾)	1420-1 1222 (1300-1)	1420-3	1222 (1300-3)
CIRCLING	1420-1¼ 1208 (1300-1¼)	1420-1½ 1208 (1300-1½)	1500-3	1760-3 1548 (1600-3)

SW-3, 03 OCT 2024 to 31 OCT 2024

SW-3, 03 OCT 2024 to 31 OCT 2024