

# RNAV (RNP) Z RWY 24R

GUAM INTL (GUM)(PGUM)

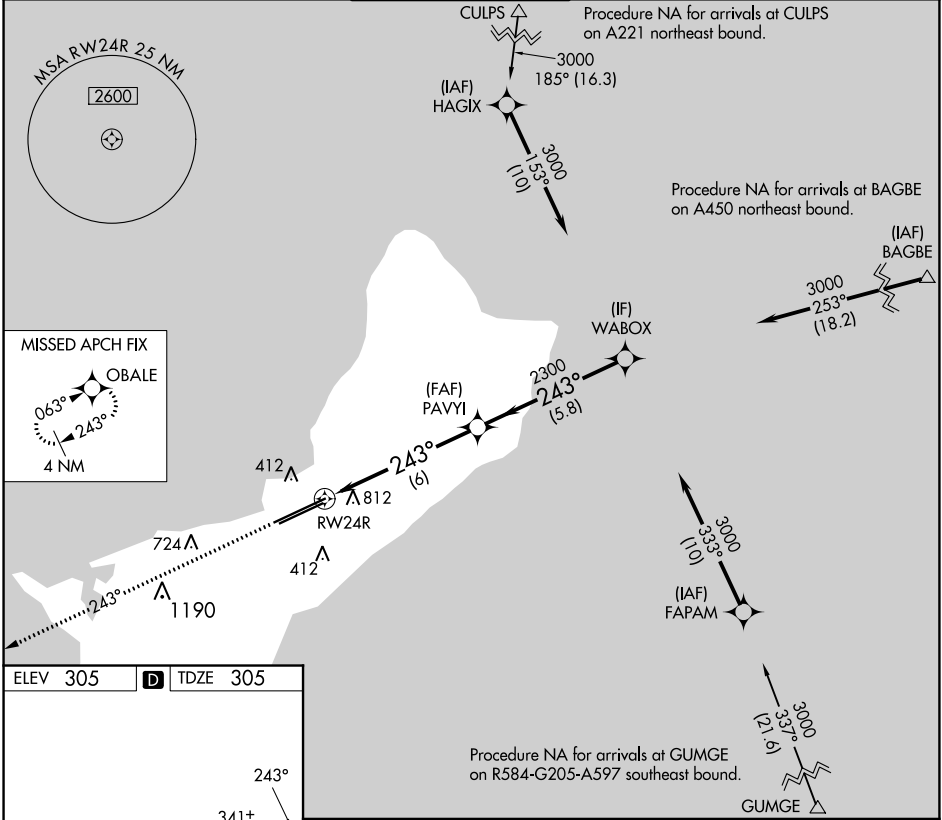
APP CRS <b>243°</b>	Rwy Idg <b>12014</b>
	TDZE <b>305</b>
	Apt Elev <b>305</b>

RNP AR APCH - GPS.

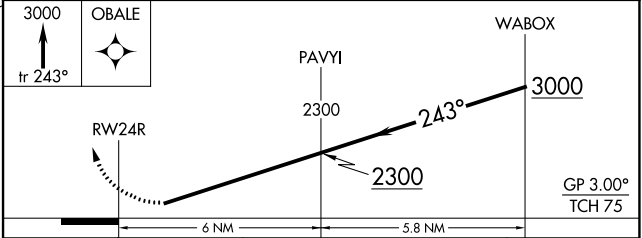
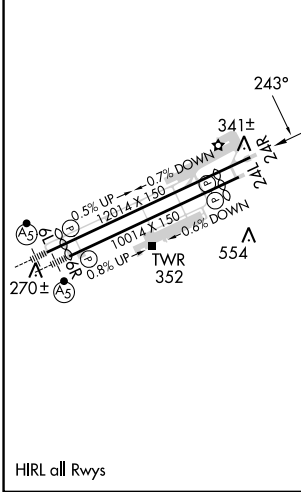
**⚠** Procedure NA at night. For uncompensated Baro-VNAV systems, procedure NA below 22°C or above 52°C.

MISSED APPROACH: Climb to 3000 on track 243° to OBALE and hold.

ATIS <b>119.0</b>	GUAM CERAP <b>119.8 269.0</b>	AGANA TOWER <b>118.1 340.2</b>	GND CON <b>121.9 336.4</b>	CLNC DEL <b>121.9</b>
----------------------	----------------------------------	-----------------------------------	-------------------------------	--------------------------



ELEV 305	<b>D</b>	TDZE 305
----------	----------	----------



CATEGORY	A	B	C	D
RNP 0.24 DA		1014-2½	709 (800-2½)	
RNP 0.30 DA		1072-2½	767 (800-2½)	

## AUTHORIZATION REQUIRED

PAC: 05 SEP 2024 to 31 OCT 2024

PAC: 05 SEP 2024 to 31 OCT 2024