

APP CRS	Rwy Idg	10014
063°	TDZE	258
	Apt Elev	305

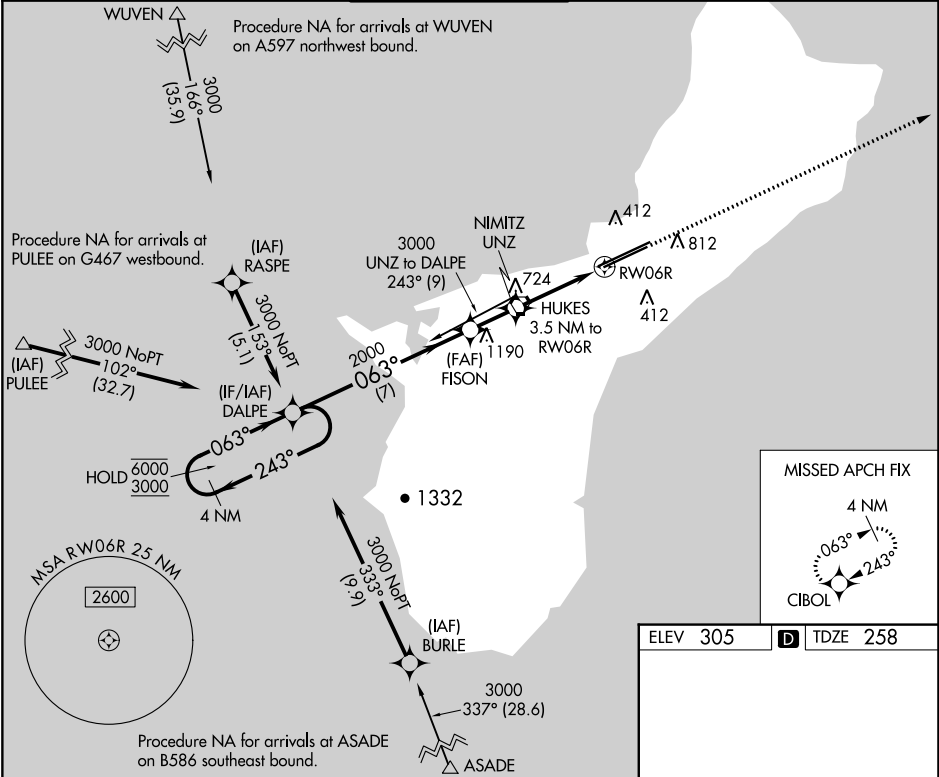
RNAV (GPS) Y RWY 6R

GUAM INTL (GUM)(PGUM)

RNP APCH - GPS.
 ▼ Rwy 6R helicopter visibility reduction below 3/4 SM NA. For inop ALS, increase Cat A and B visibility to 1 SM, and Cat C and D to 2 SM. Circling NA southeast of Rwy 6R-24L.

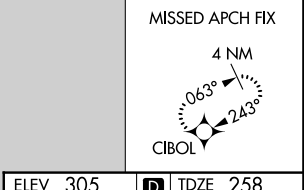
MALSR 
 MISSED APPROACH: Climb to 3000 direct CIBOL and hold.

ATIS	GUAM CERAP	AGANA TOWER	GND CON	CLNC DEL
119.0	119.8 269.0	118.1 340.2	121.9 336.4	121.9

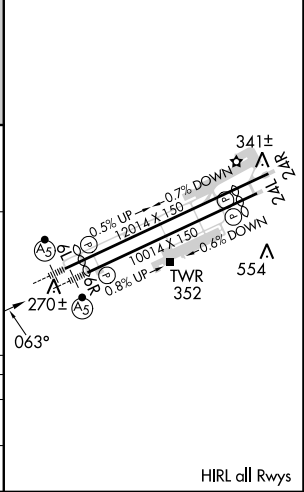
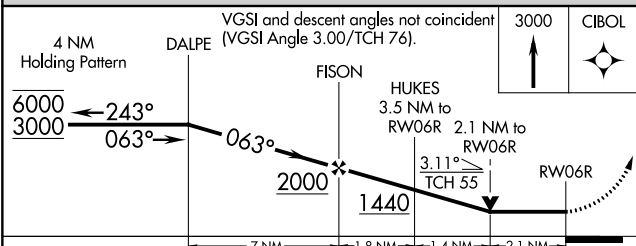


PAC, 05 SEP 2024 to 31 OCT 2024

PAC, 05 SEP 2024 to 31 OCT 2024



ELEV 305	D TDZE 258
----------	-------------------



CATEGORY	A	B	C	D
LNVA MDA	980-3/4	722 (700-3/4)	980-1 5/8	722 (700-1 5/8)
C CIRCLING	980-1	675 (700-1)	980-2 675 (700-2)	NA

HIRL all Rwys