

# HI-TACAN X RWY 06L

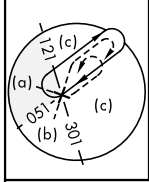
TACAN UAM Chan <b>54</b>	APCH CRS <b>065°</b>	Rwy ldg <b>10,528</b> TDZE <b>539</b> Arpt Elev <b>617</b>
-----------------------------	-------------------------	--

[USAF]

ANDERSEN AFB (PGUA)

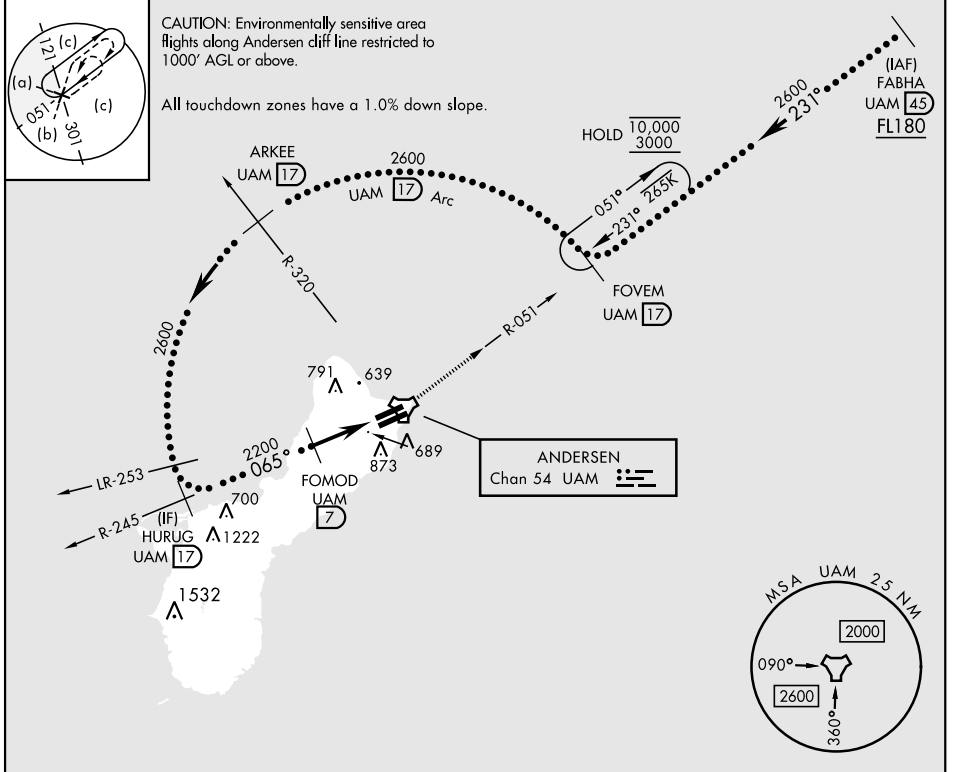
RADAR or DME required	SALS <b>(A2)</b>	MISSED APPROACH: Climb to 3000, intercept UAM R-051 to FOVEM and hold.
<p>* When ALS inop, increase CAT AB RVR to 55, vis to 1 mile; CAT CDE vis to 1½ miles.</p> <p>** Circling not authorized NW of Rwy 06L-24R.</p>		

ATIS <b>118.175 254.325</b>	GUAM APP CON <b>119.8 269.0</b>	TOWER <b>126.2 233.7</b>	GND CON <b>121.7 275.8</b>	CLNC DEL <b>126.725 256.7</b>
--------------------------------	------------------------------------	-----------------------------	-------------------------------	----------------------------------

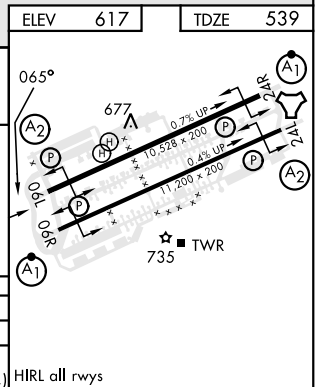
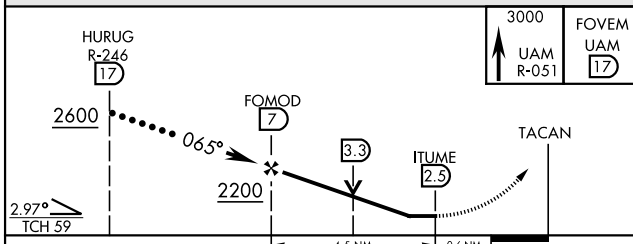


CAUTION: Environmentally sensitive area flights along Andersen cliff line restricted to 1000' AGL or above.

All touchdown zones have a 1.0% down slope.



EMERG SAFE ALT 100 NM 2900



# HI-TACAN X RWY 06L

PAC, 05 SEP 2024 to 31 OCT 2024

PAC, 05 SEP 2024 to 31 OCT 2024