

VORTAC IGB 116.2 Chan 109	APP CRS 096°	Rwy Idg TDZE Apt Elev	N/A N/A 188
---	------------------------	-----------------------------	--

VOR-A

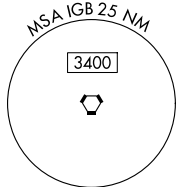
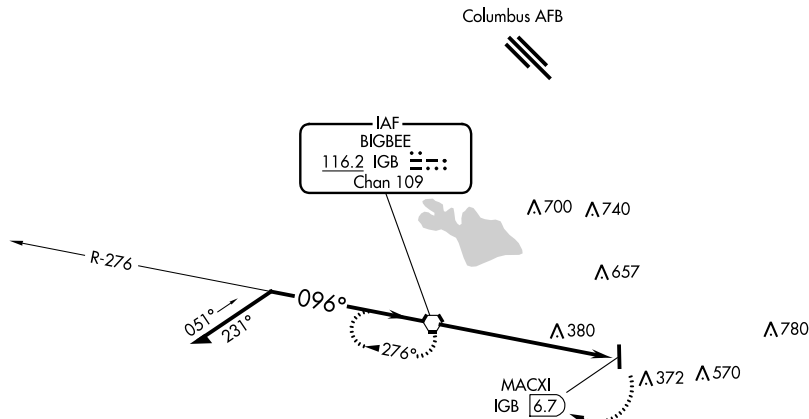
COLUMBUS-LOWNDES COUNTY (UBS)

▼ Use Columbus AFB altimeter setting; when not received, use Golden Triangle Rgnl altimeter setting and increase all MDA 20 feet.
▲ NA

MISSED APPROACH: Climbing right turn to 2000 direct IGB VORTAC and hold.

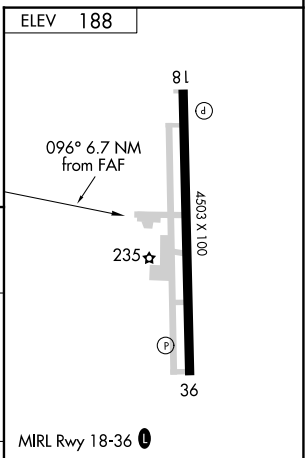
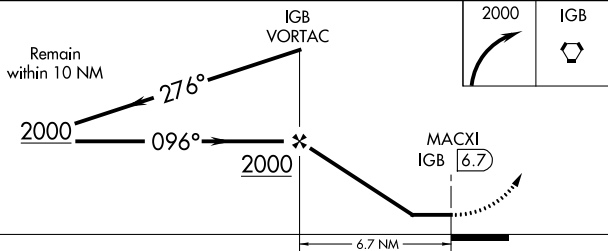
COLUMBUS APP CON ★
135.6 323.275

UNICOM
122.8 (CTAF) 0



$\Delta 1005$

ELEV 188



CATEGORY	A	B	C	D	FAF to MAP 6.7 NM					
C CIRCLING	780-1	592 (600-1)	1040-2½ 852 (900-2½)	1040-2¾ 852 (900-2¾)	Knots	60	90	120	150	180
					Min:Sec	6:42	4:28	3:21	2:41	2:14

SC-4, 03 OCT 2024 to 31 OCT 2024

SC-4, 03 OCT 2024 to 31 OCT 2024