

WAAS CH 72601 W32A	APP CRS 319°	Rwy Idg TDZE Apt Elev	6500 937 937
--	------------------------	-----------------------------	---

RNAV (GPS) RWY 32

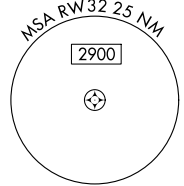
DELAWARE COUNTY RGNL (MIE)

⚠ For uncompensated Baro-VNAV systems, LNAV/VNAV NA below -16°C (4°F) or above 47°C (116°F). DME/DME RNP-0.3 NA. Baro-VNAV and VDP NA when using Fort Wayne Intl altimeter setting. For inop MALSRS when using Fort Wayne Intl altimeter setting, increase LPV all Cats visibility to 1½ mile. When local altimeter setting not received, use Fort Wayne Intl altimeter setting and increase DA 121 feet; increase LPV and LNAV/VNAV all Cats visibility by ½ mile; increase all MDA 140 feet and LNAV visibility Cats C and D to 1¼; increase Circling visibility Cats C and D by ¼ mile. For inop MALSRS, increase all LPV Cats visibility to 1 SM.

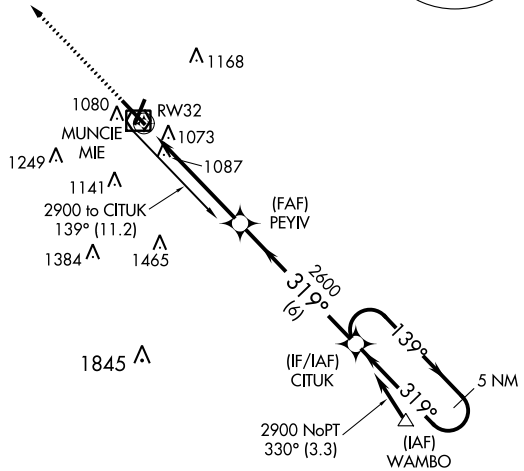
MALSRS

MISSED APPROACH:
Climb to 2800 direct JOGBA and hold.

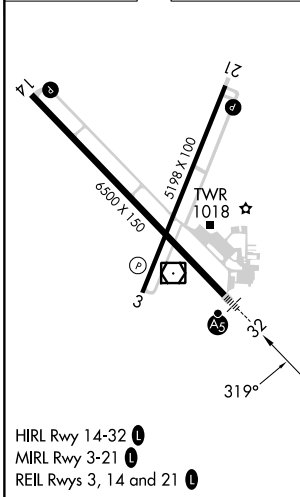
ATIS 133.25	INDIANAPOLIS APP CON 120.65 317.8	MUNCIE TOWER ★ 120.1 (CTAF) 0	GND CON 121.9	UNICOM 122.95
-----------------------	---	---	-------------------------	-------------------------



Procedure NA for arrivals on MIE VOR/DME airway radials 090 CW 109.



ELEV 937	D TDZE 937
----------	-------------------



HIRL Rwy 14-32 **Ⓛ**
MIRL Rwy 3-21 **Ⓛ**
REIL Rwy 3, 14 and 21 **Ⓛ**

2800	JOGBA	5 NM Holding Pattern	
*LNAV only.	*1.2 NM to RW32	PEYIV 2600	CITUK 2900
RW32		2600	2900
1.2		3.8 NM	6 NM
319°	139°	319°	139°
GP 3.04° TCH 52			
CATEGORY	A	B	C
LPV DA	1241-½ 304 (400-½)		
LNAV/VNAV DA	1396-1⅛ 459 (500-1⅛)		
LNAV MDA	1460-½ 523 (600-½)	1460-1 523 (600-1)	
C CIRCLING	1460-1 523 (600-1)	1480-1½ 543 (600-1½)	1560-2 623 (700-2)

EC-2, 03 OCT 2024 to 31 OCT 2024

EC-2, 03 OCT 2024 to 31 OCT 2024