


LOC I-ANB <b>111.5</b>	APP CRS <b>052°</b>	Rwy Idg <b>7000</b>
		TDZE <b>595</b>
		Apt Elev <b>612</b>

# ILS Z or LOC Z RWY 5

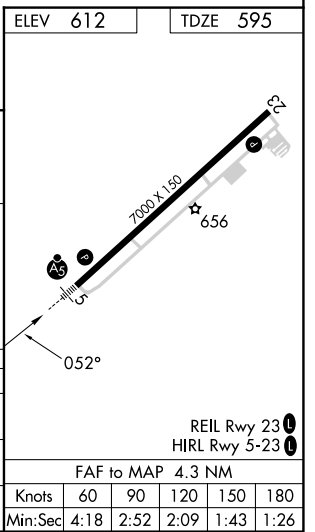
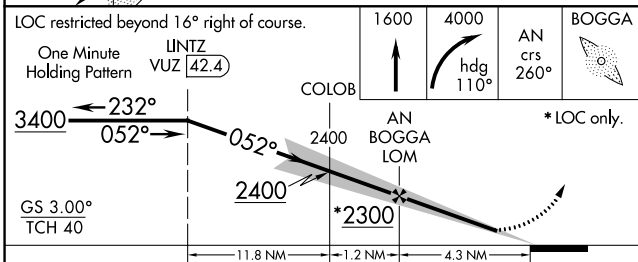
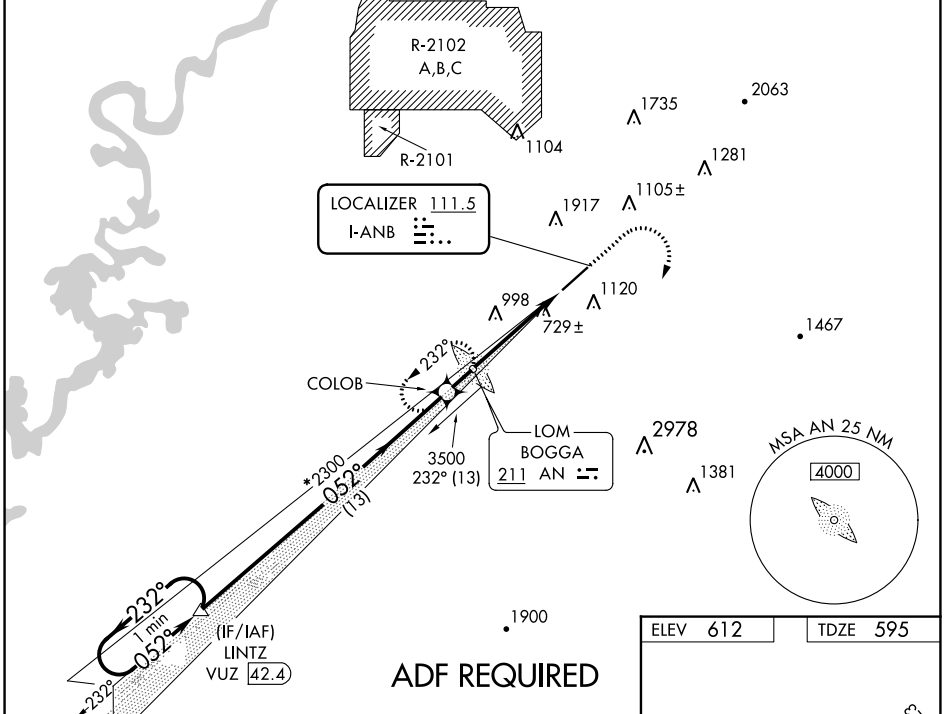
ANNISTON RGNL (ANB)

**⚠** Circling NA north of Rwy 5-23. ADF required. When local altimeter setting not received, use Gadsden altimeter setting: increase DA to 975 and all visibilities 1/4 SM; all MDAs 80 feet, and all Cat C visibilities 1/2 SM. For inop ALS when using Gadsden altimeter setting, increase S-ILS 5 all Cats visibility to 1 SM. For inop ALS when using Gadsden altimeter setting, increase S-ILS 5 all Cats visibility to 1 1/4 SM.

**MALS** 

**MISSED APPROACH:** Climb to 1600 then climbing right turn to 4000 on heading 110° then on BOGGA LOM 260° course to BOGGA LOM and hold.

ASOS <b>119.675</b>	BIRMINGHAM APP CON <b>132.15 285.45</b>	CTAF <b>123.60</b>	UNICOM <b>123.0</b>
------------------------	--	-----------------------	------------------------



CATEGORY	A	B	C	D
S-ILS 5	909-1/2 314 (300-1/2)			
S-LOC 5	1120-1/2 525 (600-1/2)	1120-1 525 (600-1)		NA
<b>C</b> CIRCLING	1420-1 808 (900-1)	1420-2 1/4 808 (900-2 1/4)		1820-3 1208 (1300-3)

SE-4, 03 OCT 2024 to 31 OCT 2024

SE-4, 03 OCT 2024 to 31 OCT 2024