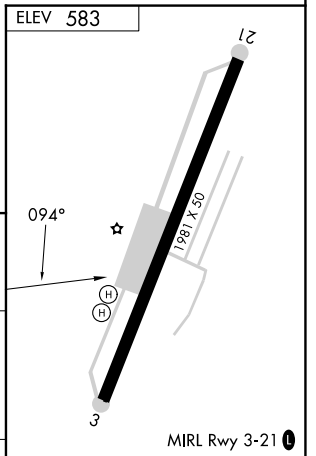
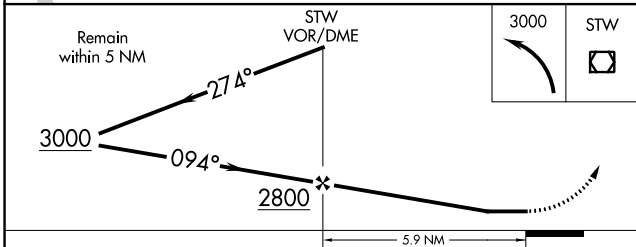
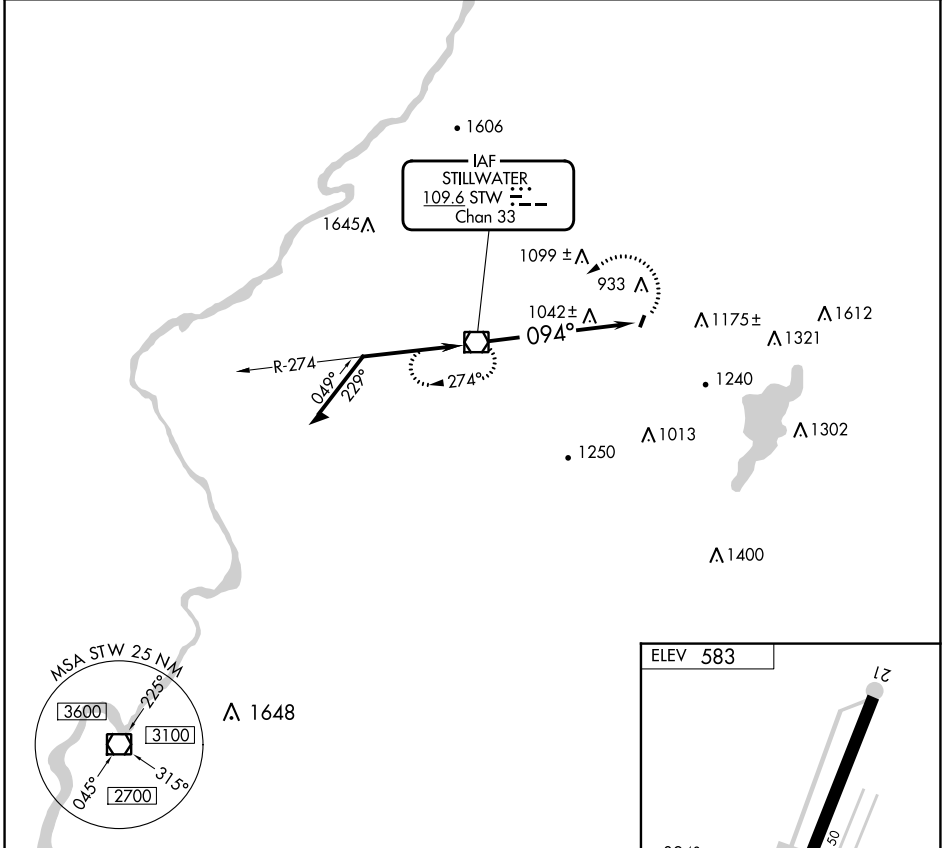


VOR/DME STW <b>109.6</b> Chan <b>33</b>	APP CRS <b>094°</b>	Rwy Idg TDZE Apt Elev	<b>1981</b> <b>N/A</b> <b>583</b>
-----------------------------------------------	------------------------	-----------------------------	-----------------------------------------

**VOR-A**  
AEROFLEX/ANDOVER (12N)

**▼** When local altimeter setting not received, use Caldwell altimeter setting and increase MDA 120 feet. Procedure NA at night.  
**▲** MISSED APPROACH: Climbing left turn to 3000 direct STW VOR/DME and hold.

NEWARK APP CON <b>127.6 379.9</b>	UNICOM <b>122.8 (CTAF)</b>
--------------------------------------	-------------------------------



CATEGORY	A	B	C	D	FAF to MAP 5.9 NM
<b>C</b> CIRCLING	1560-1¼ 977 (1000-1¼)		NA		Knots: 60 90 120 150 180 Min:Sec: 5:54 3:56 2:57 2:22 1:58

NE-2, 03 OCT 2024 to 31 OCT 2024

NE-2, 03 OCT 2024 to 31 OCT 2024