

WAAS CH 56313 W12A	APP CRS 124°	Rwy Idg TDZE Apt Elev	4999 8 9
--	------------------------	-----------------------------	-------------------------------------

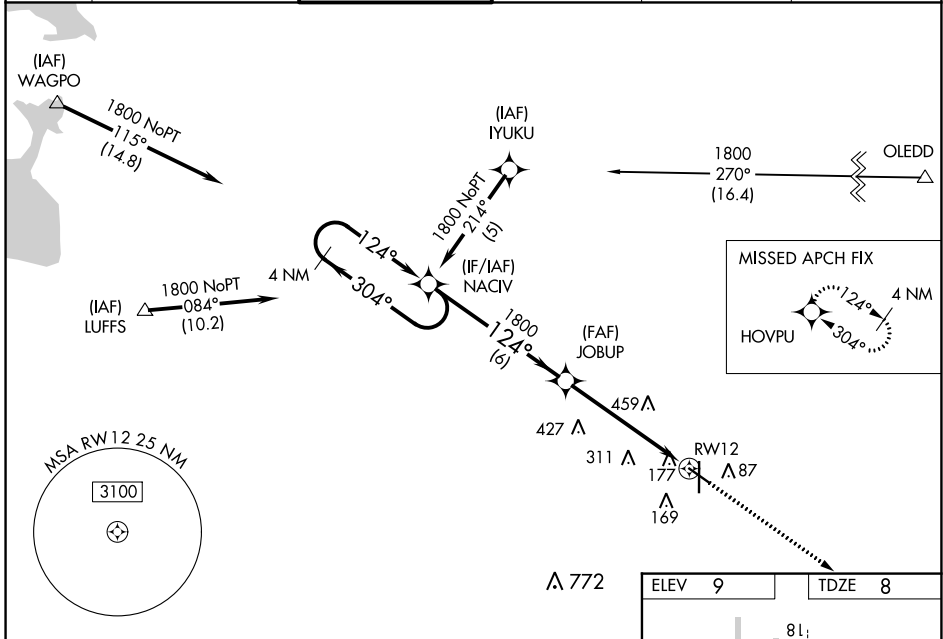
RNAV (GPS) RWY 12

HOUMA-TERREBONNE (HUM)

▼ For uncompensated Baro-VNAV systems, LNAV/VNAV NA below -15°C (5°F) or above 49°C (120°F). DME/DME RNP-0.3 NA. Visibility reduction by helicopters NA.
▲ When local altimeter setting not received, use Louis Armstrong New Orleans Intl altimeter setting: increase LPV DA to 370 feet and all visibilities 1/8 SM, increase LNAV/VNAV DA to 567 feet and all visibilities 1/4 SM; increase all MDA 80 feet and visibility Cats B, C and D 1/4 SM. Baro-VNAV NA when using Louis Armstrong New Orleans Intl altimeter setting.

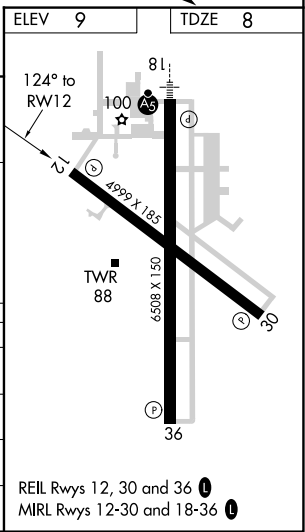
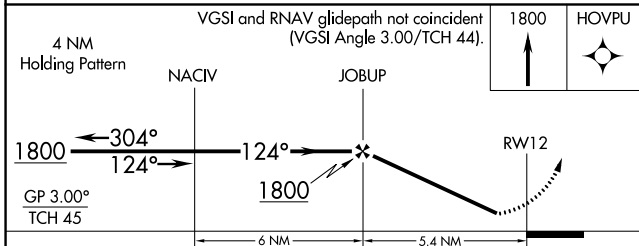
MISSED APPROACH: Climb to 1800 direct HOVPU and hold.

ATIS 120.25	NEW ORLEANS APP CON 118.9 350.35	HOUMA TOWER ★ 125.3 (CTAF) 0 346.3	GND CON 123.875	CLNC DEL 118.9 (When twr closed)	UNICOM 122.95
-----------------------	--	--	---------------------------	---	-------------------------



SC-4, 03 OCT 2024 to 31 OCT 2024

SC-4, 03 OCT 2024 to 31 OCT 2024



CATEGORY	A	B	C	D
LPV DA		293-7/8	285 (300-7/8)	
LNAV/VNAV DA		490-13/8	482 (500-13/8)	
LNAV MDA	680-1	672 (700-1)	680-17/8	672 (700-17/8)
C CIRCLING	680-1	671 (700-1)	760-2 1/4 751 (800-2 1/4)	760-2 1/2 751 (800-2 1/2)

REIL Rwy 12, 30 and 36 **0**
MIRL Rwy 12-30 and 18-36 **0**